

CTLA4 monoclonal antibody (M27), clone 7H8

Mouse monoclonal antibody raised against a partial recombinant CTLA4.

Catalog # AT4673a

Product Information

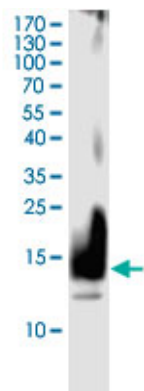
| | |
|--------------------------|--------------------------|
| Application | WB, E |
| Primary Accession | P16410 |
| Other Accession | BC074842 |
| Reactivity | Human |
| Host | Mouse |
| Clonality | Monoclonal |
| Isotype | IgG1 Kappa |
| Clone Names | 7H8 |
| Calculated MW | 24656 |

Additional Information

| | |
|---------------------------|------------------------------------------------------------------------------------------------------------------------------|
| Gene ID | 1493 |
| Other Names | Cytotoxic T-lymphocyte protein 4, Cytotoxic T-lymphocyte-associated antigen 4, CTLA-4, CD152, CTLA4, CD152 |
| Target/Specificity | CTLA4 (AAH74842.1, 37 a.a. ~ 161 a.a) partial recombinant protein with GST tag. |
| Dilution | WB~~1:500~1000 E~~N/A |
| Format | In 1x PBS, pH 7.4 |
| Storage | Store at -20°C or lower. Aliquot to avoid repeated freezing and thawing. |
| Precautions | CTLA4 monoclonal antibody (M27), clone 7H8 is for research use only and not for use in diagnostic or therapeutic procedures. |

Images

Western Blot detection against Immunogen (15.95 KDa) .



Please note: All products are 'FOR RESEARCH USE ONLY. NOT FOR USE IN DIAGNOSTIC OR THERAPEUTIC PROCEDURES'.