

ACE2 monoclonal antibody (M05), clone CC11

Mouse monoclonal antibody raised against a partial recombinant ACE2.

Catalog # AT4676a

Product Information

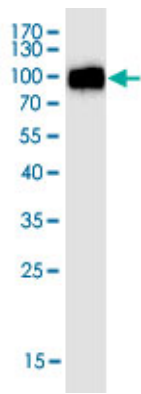
Application	WB, E
Primary Accession	Q9BYF1
Other Accession	A0A7D6JAD5 , Q9UFZ6
Reactivity	Human
Host	Mouse
Clonality	Monoclonal
Isotype	IgG2a Kappa
Clone Names	CC11
Calculated MW	92463

Additional Information

Gene ID	59272
Other Names	Angiotensin-converting enzyme 2, Angiotensin-converting enzyme homolog, ACEH, Angiotensin-converting enzyme-related carboxypeptidase, ACE-related carboxypeptidase, Metalloprotease MPROT15
Target/Specificity	ACE2 (NP_068576.1, 18 a.a. ~ 740 a.a) partial recombinant protein with GST tag.
Dilution	WB~~1:500~1000 E~~N/A
Format	In 1x PBS, pH 7.4
Storage	Store at -20°C or lower. Aliquot to avoid repeated freezing and thawing.
Precautions	ACE2 monoclonal antibody (M05), clone CC11 is for research use only and not for use in diagnostic or therapeutic procedures.

Images

Western Blot detection against Immunogen (82.61 KDa) .



Please note: All products are 'FOR RESEARCH USE ONLY. NOT FOR USE IN DIAGNOSTIC OR THERAPEUTIC PROCEDURES'.