

PDCD6 monoclonal antibody (M01J), clone 2B4

Mouse monoclonal antibody raised against a partial recombinant PDCD6.

Catalog # AT4678a

Product Information

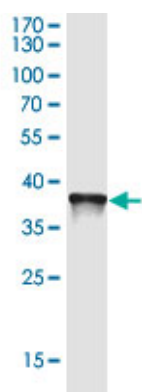
Application	WB, E
Primary Accession	O75340
Other Accession	B2RD16 , Q5TZS0
Reactivity	Human
Host	Mouse
Clonality	Monoclonal
Isotype	IgG2a Kappa
Clone Names	2B4
Calculated MW	21868

Additional Information

Gene ID	10016
Other Names	Programmed cell death protein 6, Apoptosis-linked gene 2 protein homolog, ALG-2, ALG2
Target/Specificity	PDCD6 (AAH12384.1, 92 a.a. ~ 191 a.a) partial recombinant protein with GST tag. MW of the GST tag alone is 26 KDa.
Dilution	WB~~1:500~1000 E~~N/A
Format	In 1x PBS, pH 7.4
Storage	Store at -20°C or lower. Aliquot to avoid repeated freezing and thawing.
Precautions	PDCD6 monoclonal antibody (M01J), clone 2B4 is for research use only and not for use in diagnostic or therapeutic procedures.

Images

Western Blot detection against Immunogen (36.63 KDa) .



Please note: All products are 'FOR RESEARCH USE ONLY. NOT FOR USE IN DIAGNOSTIC OR THERAPEUTIC PROCEDURES'.