

LDHB monoclonal antibody (M03), clone 3H4

Mouse monoclonal antibody raised against a full-length recombinant LDHB.

Catalog # AT4679a

Product Information

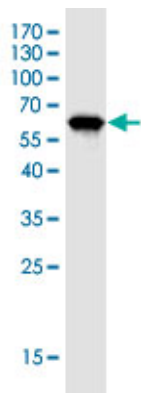
| | |
|--------------------------|------------------------|
| Application | WB, E |
| Primary Accession | P07195 |
| Reactivity | Human |
| Host | Mouse |
| Clonality | Monoclonal |
| Isotype | IgG1 Kappa |
| Clone Names | 3H4 |
| Calculated MW | 36638 |

Additional Information

| | |
|---------------------------|---|
| Gene ID | 3945 |
| Other Names | L-lactate dehydrogenase B chain, LDH-B, 1.1.1.27, LDH heart subunit, LDH-H, Renal carcinoma antigen NY-REN-46, LDHB |
| Target/Specificity | LDHB (AAH02362.1, 1 a.a. ~ 334 a.a) full-length recombinant protein with GST tag. MW of the GST tag alone is 26 KDa. |
| Dilution | WB~~1:500~1000 E~~N/A |
| Format | In 1x PBS, pH 7.4 |
| Storage | Store at -20°C or lower. Aliquot to avoid repeated freezing and thawing. |
| Precautions | LDHB monoclonal antibody (M03), clone 3H4 is for research use only and not for use in diagnostic or therapeutic procedures. |

Images

Western Blot detection against Immunogen (62.48 KDa) .



Please note: All products are 'FOR RESEARCH USE ONLY. NOT FOR USE IN DIAGNOSTIC OR THERAPEUTIC PROCEDURES'.