

ECHDC3 Antibody (N-term)

Purified Rabbit Polyclonal Antibody (Pab)

Catalog # AW5004

Product Information

Application	IHC-P, WB
Primary Accession	Q96DC8
Reactivity	Human
Host	Rabbit
Clonality	polyclonal
Calculated MW	32634
Isotype	Rabbit IgG
Antigen Source	HUMAN

Additional Information

Gene ID	79746
Antigen Region	31-66
Other Names	Enoyl-CoA hydratase domain-containing protein 3, mitochondrial, ECHDC3
Dilution	IHC-P~~1:100~500 WB~~1:1000
Target/Specificity	This ECHDC3 antibody is generated from a rabbit immunized with a KLH conjugated synthetic peptide between 31-66 amino acids from the N-terminal region of human ECHDC3.
Format	Purified polyclonal antibody supplied in PBS with 0.09% (W/V) sodium azide. This antibody is purified through a protein A column, followed by peptide affinity purification.
Storage	Maintain refrigerated at 2-8°C for up to 2 weeks. For long term storage store at -20°C in small aliquots to prevent freeze-thaw cycles.
Precautions	ECHDC3 Antibody (N-term) is for research use only and not for use in diagnostic or therapeutic procedures.

Protein Information

Name	ECHDC3 (HGNC:23489)
Function	May play a role in fatty acid biosynthesis and insulin sensitivity.
Cellular Location	Mitochondrion.

Tissue Location

Expressed in adipocytes (PubMed:31010960). Expressed in blood cells, with higher expression in patients with low coronary lesions (PubMed:27586541).

References

Ota T.,et al.Nat. Genet. 36:40-45(2004).

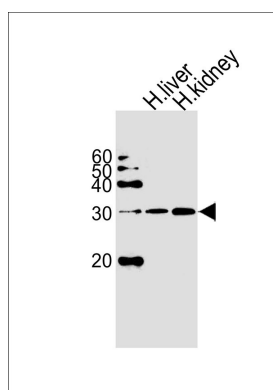
Wan D.,et al.Proc. Natl. Acad. Sci. U.S.A. 101:15724-15729(2004).

Suzuki Y.,et al.Submitted (APR-2005) to the EMBL/GenBank/DDBJ databases.

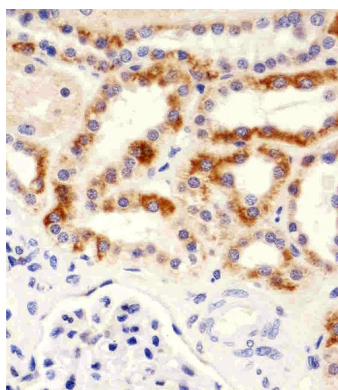
Deloukas P.,et al.Nature 429:375-381(2004).

Mural R.J.,et al.Submitted (SEP-2005) to the EMBL/GenBank/DDBJ databases.

Images



Western blot analysis of lysates from human liver and kidney tissue lysate (from left to right), using ECHDC3 Antibody (N-term)(Cat. #AW5004). AW5004 was diluted at 1:1000 at each lane. A goat anti-rabbit IgG H&L(HRP) at 1:5000 dilution was used as the secondary antibody.



Immunohistochemical analysis of paraffin-embedded H. kidney section using ECHDC3 Antibody (N-term)(Cat#AW5004). AW5004 was diluted at 1:25 dilution. A peroxidase-conjugated goat anti-rabbit IgG at 1:400 dilution was used as the secondary antibody, followed by DAB staining.

Please note: All products are 'FOR RESEARCH USE ONLY. NOT FOR USE IN DIAGNOSTIC OR THERAPEUTIC PROCEDURES'.