

Serum amyloid P-component(1-203) Antibody (Center)

Purified Rabbit Polyclonal Antibody (Pab)

Catalog # AW5005

Product Information

Application	IHC-P, WB
Primary Accession	P02743
Reactivity	Human
Predicted	Mouse
Host	Rabbit
Clonality	polyclonal
Calculated MW	25387
Isotype	Rabbit IgG
Antigen Source	HUMAN

Additional Information

Gene ID	325
Antigen Region	153-187
Other Names	Serum amyloid P-component, SAP, 95S alpha-1-glycoprotein, Serum amyloid P-component(1-203), APCS, PTX2
Dilution	IHC-P~~1:100~500 WB~~1:1000
Target/Specificity	This Serum amyloid P-component(1-203) antibody is generated from a rabbit immunized with a KLH conjugated synthetic peptide between 153-187 amino acids from the Central region of human Serum amyloid P-component(1-203).
Format	Purified polyclonal antibody supplied in PBS with 0.09% (W/V) sodium azide. This antibody is purified through a protein A column, followed by peptide affinity purification.
Storage	Maintain refrigerated at 2-8°C for up to 2 weeks. For long term storage store at -20°C in small aliquots to prevent freeze-thaw cycles.
Precautions	Serum amyloid P-component(1-203) Antibody (Center) is for research use only and not for use in diagnostic or therapeutic procedures.

Protein Information

Name	APCS
Synonyms	PTX2

Function	Can interact with DNA and histones and may scavenge nuclear material released from damaged circulating cells. May also function as a calcium-dependent lectin.
Cellular Location	Secreted.
Tissue Location	Found in serum and urine.

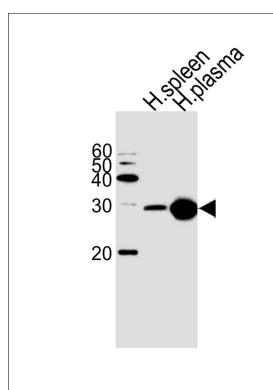
Background

Can interact with DNA and histones and may scavenge nuclear material released from damaged circulating cells. May also function as a calcium-dependent lectin.

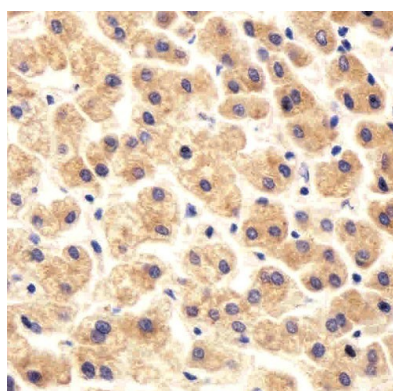
References

Mantzouranis E.C.,et al.J. Biol. Chem. 260:7752-7756(1985).
 Ohnishi S.,et al.J. Biochem. 100:849-858(1986).
 Kalnine N.,et al.Submitted (MAY-2003) to the EMBL/GenBank/DDBJ databases.
 Ebert L.,et al.Submitted (MAY-2004) to the EMBL/GenBank/DDBJ databases.
 Gregory S.G.,et al.Nature 441:315-321(2006).

Images



Western blot analysis of lysates from human spleen and plasma tissue lysate(from left to right), using Serum amyloid P-component(1-203) Antibody (Center)(Cat. #AW5005). AW5005 was diluted at 1:1000 at each lane. A goat anti-rabbit IgG H&L(HRP) at 1:5000 dilution was used as the secondary antibody.



Immunohistochemical analysis of paraffin-embedded H. liver section using Serum amyloid P-component(1-203) Antibody(Center)(Cat#AW5005). AW5005 was diluted at 1:25 dilution. A peroxidase-conjugated goat anti-rabbit IgG at 1:400 dilution was used as the secondary antibody, followed by DAB staining.

Please note: All products are 'FOR RESEARCH USE ONLY. NOT FOR USE IN DIAGNOSTIC OR THERAPEUTIC PROCEDURES'.