

# RPL6 Antibody (N-term)

Purified Rabbit Polyclonal Antibody (Pab)

Catalog # AW5024

## Product Information

---

<b>Application</b>	IHC-P, IF, FC, WB
<b>Primary Accession</b>	<a href="#">Q02878</a>
<b>Reactivity</b>	Human
<b>Host</b>	Rabbit
<b>Clonality</b>	polyclonal
<b>Calculated MW</b>	32728
<b>Isotype</b>	Rabbit IgG
<b>Antigen Source</b>	HUMAN

## Additional Information

---

<b>Gene ID</b>	6128
<b>Antigen Region</b>	2-35
<b>Other Names</b>	60S ribosomal protein L6, Neoplasm-related protein C140, Tax-responsive enhancer element-binding protein 107, TaxREB107, RPL6, TXREB1
<b>Dilution</b>	IHC-P~~1:100~500 IF~~1:25 FC~~1:25 WB~~1:1000
<b>Target/Specificity</b>	This RPL6 antibody is generated from a rabbit immunized with a KLH conjugated synthetic peptide between 2-35amino acids from the N-terminal region of human RPL6.
<b>Format</b>	Purified polyclonal antibody supplied in PBS with 0.09% (W/V) sodium azide. This antibody is purified through a protein A column, followed by peptide affinity purification.
<b>Storage</b>	Maintain refrigerated at 2-8°C for up to 2 weeks. For long term storage store at -20°C in small aliquots to prevent freeze-thaw cycles.
<b>Precautions</b>	RPL6 Antibody (N-term) is for research use only and not for use in diagnostic or therapeutic procedures.

## Protein Information

---

<b>Name</b>	RPL6
<b>Synonyms</b>	TXREB1
<b>Function</b>	Component of the large ribosomal subunit (PubMed: <a href="#">12962325</a> ,

PubMed:[23636399](#), PubMed:[25901680](#), PubMed:[25957688](#), PubMed:[32669547](#)). The ribosome is a large ribonucleoprotein complex responsible for the synthesis of proteins in the cell (PubMed:[12962325](#), PubMed:[23636399](#), PubMed:[25901680](#), PubMed:[25957688](#), PubMed:[32669547](#)).

## Cellular Location

Cytoplasm, cytosol. Cytoplasm Rough endoplasmic reticulum {ECO:0000250|UniProtKB:Q2YGT9} Note=Detected on cytosolic polysomes (PubMed:25957688). Detected in ribosomes that are associated with the rough endoplasmic reticulum (By similarity). {ECO:0000250|UniProtKB:Q2YGT9, ECO:0000269|PubMed:25957688}

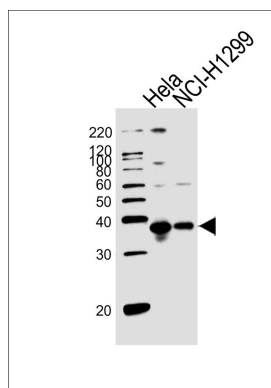
## Background

Specifically binds to domain C of the Tax-responsive enhancer element in the long terminal repeat of HTLV-I.

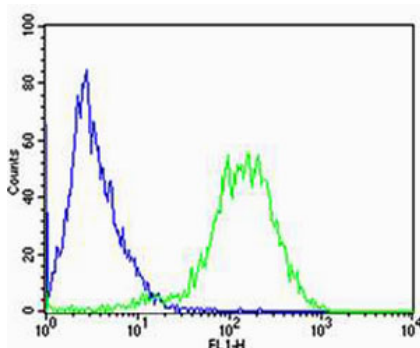
## References

Zaman G.J.R.,et al.Nucleic Acids Res. 21:1673-1673(1993).  
Morita T.,et al.AIDS Res. Hum. Retroviruses 9:115-121(1993).  
Kenmochi N.,et al.J. Hum. Genet. 45:290-293(2000).  
Ohta K.,et al.J. Mol. Endocrinol. 12:85-92(1994).  
Odintsova T.I.,et al.J. Protein Chem. 22:249-258(2003).

## Images

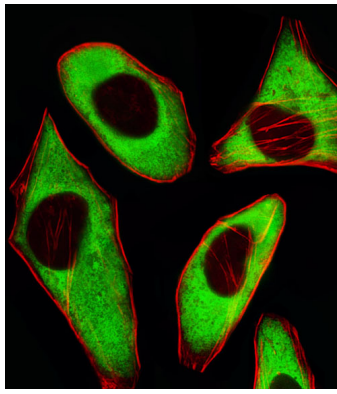


Western blot analysis of lysates from HeLa, NCI-H1299 cell line (from left to right), using RPL6 Antibody (N-term)(Cat. #AW5024). AW5024 was diluted at 1:1000 at each lane. A goat anti-rabbit IgG H&L(HRP) at 1:10000 dilution was used as the secondary antibody.

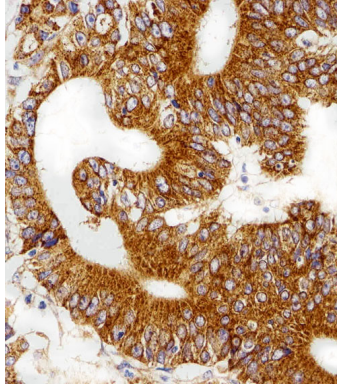


Flow cytometric analysis of Jurkat cells using RPL6 Antibody (N-term)(green, Cat#AW5024) compared to an isotype control of rabbit IgG(blue). AW5024 was diluted at 1:25 dilution. An Alexa Fluor® 488 goat anti-rabbit IgG at 1:400 dilution was used as the secondary antibody.

Fluorescent image of HeLa cells stained with RPL6 Antibody (N-term)(Cat#AW5024). AW5024 was diluted at 1:25 dilution. An Alexa Fluor 488-conjugated goat anti-rabbit IgG at 1:400 dilution was used as the secondary antibody (green). Cytoplasmic actin was counterstained with Alexa Fluor® 555 conjugated with



Phalloidin (red).



Immunohistochemical analysis of paraffin-embedded H. gastric carcinoma section using RPL6 Antibody (N-term)(Cat#NA). NA was diluted at 1:100 dilution. A peroxidase-conjugated goat anti-rabbit IgG at 1:400 dilution was used as the secondary antibody, followed by DAB staining.

Please note: All products are 'FOR RESEARCH USE ONLY. NOT FOR USE IN DIAGNOSTIC OR THERAPEUTIC PROCEDURES'.