

LYZ Antibody (C-term)

Purified Rabbit Polyclonal Antibody (Pab)

Catalog # AW5031

Product Information

Application	IHC-P, WB
Primary Accession	P61626
Reactivity	Human
Host	Rabbit
Clonality	Polyclonal
Calculated MW	16537
Isotype	Rabbit IgG
Antigen Source	HUMAN

Additional Information

Gene ID	4069
Antigen Region	119-154
Other Names	Lysozyme C, 4-beta-N-acetylmuramidase C, LYZ, LZM
Dilution	IHC-P~~1:100~500 WB~~1:2000
Target/Specificity	This LYZ antibody is generated from a rabbit immunized with a KLH conjugated synthetic peptide between 119-154 amino acids from the C-terminal region of human LYZ.
Format	Purified polyclonal antibody supplied in PBS with 0.09% (W/V) sodium azide. This antibody is purified through a protein A column, followed by peptide affinity purification.
Storage	Maintain refrigerated at 2-8°C for up to 2 weeks. For long term storage store at -20°C in small aliquots to prevent freeze-thaw cycles.
Precautions	LYZ Antibody (C-term) is for research use only and not for use in diagnostic or therapeutic procedures.

Protein Information

Name	LYZ
Synonyms	LZM
Function	Lysozymes have primarily a bacteriolytic function; those in tissues and body fluids are associated with the monocyte-macrophage system and enhance the

activity of immunoagents.

Cellular Location

Secreted.

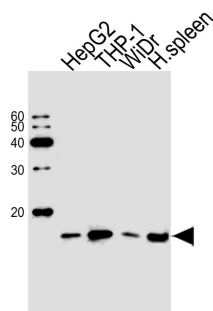
Background

Lysozymes have primarily a bacteriolytic function; those in tissues and body fluids are associated with the monocyte- macrophage system and enhance the activity of immunoagents.

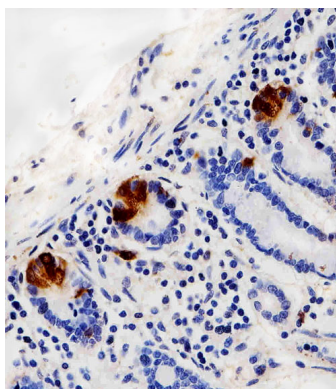
References

- Castanon M.J.,et al.Gene 66:223-234(1988).
Chung L.P.,et al.Proc. Natl. Acad. Sci. U.S.A. 85:6227-6231(1988).
Yoshimura K.,et al.Biochem. Biophys. Res. Commun. 150:794-801(1988).
Peters C.W.B.,et al.Eur. J. Biochem. 182:507-516(1989).
Huang B.,et al.Sheng Wu Hua Hsueh Tsa Chih 9:269-273(1993).

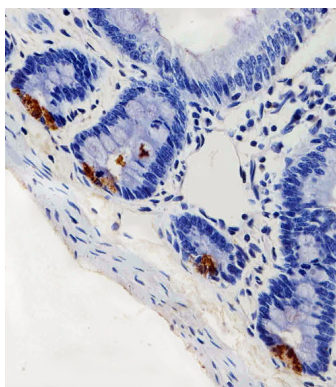
Images



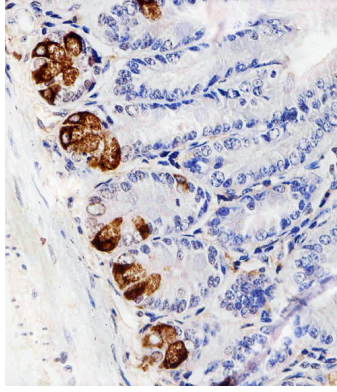
Western blot analysis of lysates from HepG2, THP-1, WiDr cell line and human spleen tissue lysate(from left to right), using LYZ Antibody (C-term)(Cat. #AW5031). AW5031 was diluted at 1:1000 at each lane. A goat anti-rabbit IgG H&L(HRP) at 1:10000 dilution was used as the secondary antibody.



Immunohistochemical analysis of paraffin-embedded H. small intestine section using LYZ Antibody (C-term)(Cat#AW5031). AW5031 was diluted at 1:100 dilution. A peroxidase-conjugated goat anti-rabbit IgG at 1:400 dilution was used as the secondary antibody, followed by DAB staining.



Immunohistochemical analysis of paraffin-embedded R. small intestine section using LYZ Antibody (C-term)(Cat#AW5031). AW5031 was diluted at 1:100 dilution. A peroxidase-conjugated goat anti-rabbit IgG at 1:400 dilution was used as the secondary antibody, followed by DAB staining.



Immunohistochemical analysis of paraffin-embedded M. small intestine section using LYZ Antibody (C-term)(Cat#AW5031). AW5031 was diluted at 1:100 dilution. A peroxidase-conjugated goat anti-rabbit IgG at 1:400 dilution was used as the secondary antibody, followed by DAB staining.

Please note: All products are 'FOR RESEARCH USE ONLY. NOT FOR USE IN DIAGNOSTIC OR THERAPEUTIC PROCEDURES'.