

TBB5 Antibody

Mouse Monoclonal Antibody (Mab)

Catalog # AW5051

Product Information

Application	IHC-P, IF, WB
Primary Accession	P07437
Other Accession	P09244 , Q91575 , P69897 , Q767L7 , P99024 , P69893 , Q2KJD0
Reactivity	Mouse, Rat, Human
Predicted	Hamster, Bovine, Chicken, Xenopus
Host	Mouse
Clonality	Monoclonal
Calculated MW	49671
Isotype	IgG2b, κ
Antigen Source	HUMAN

Additional Information

Gene ID	203068
Antigen Region	1-219
Other Names	TUBB; TUBB5; Tubulin beta chain; Tubulin beta-5 chain
Dilution	IHC-P~~1:100~500 IF~~1:25 WB~~1:1000
Target/Specificity	TBB5 recombinant protein is used to produce this monoclonal antibody.
Format	Purified monoclonal antibody supplied in PBS with 0.09% (W/V) sodium azide. This antibody is purified through a protein G column, followed by dialysis against PBS.
Storage	Maintain refrigerated at 2-8°C for up to 2 weeks. For long term storage store at -20°C in small aliquots to prevent freeze-thaw cycles.
Precautions	TBB5 Antibody is for research use only and not for use in diagnostic or therapeutic procedures.

Protein Information

Name	TUBB
Synonyms	TUBB5
Function	Tubulin is the major constituent of microtubules, a cylinder consisting of laterally associated linear protofilaments composed of alpha- and

beta-tubulin heterodimers. Microtubules grow by the addition of GTP-tubulin dimers to the microtubule end, where a stabilizing cap forms. Below the cap, tubulin dimers are in GDP-bound state, owing to GTPase activity of alpha-tubulin.

Cellular Location

Cytoplasm, cytoskeleton

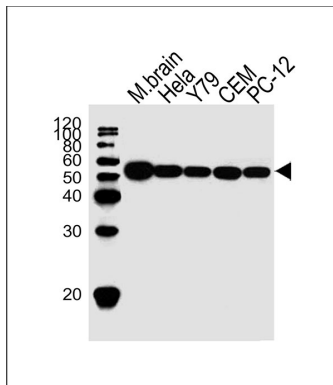
Tissue Location

Ubiquitously expressed with highest levels in spleen, thymus and immature brain.

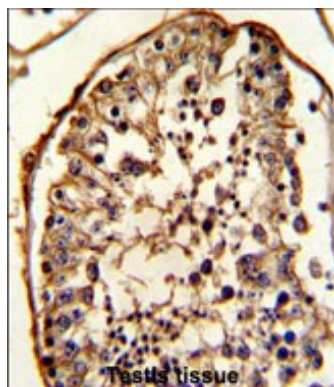
References

An approach based on a genome-wide association study reveals candidate loci for narcolepsy. Shimada M, et al. Hum Genet, 2010 Oct. PMID 20677014. High-density SNP screening of the major histocompatibility complex in systemic lupus erythematosus demonstrates strong evidence for independent susceptibility regions. Barcellos LF, et al. PLoS Genet, 2009 Oct. PMID 19851445. Proteome analysis of schizophrenia patients Wernicke's area reveals an energy metabolism dysregulation. Martins-de-Souza D, et al. BMC Psychiatry, 2009 Apr 30. PMID 19405953. Identification of interaction partners for individual SH3 domains of Fas ligand associated members of the PCH protein family in T lymphocytes. Linkermann A, et al. Biochim Biophys Acta, 2009 Feb. PMID 19041431. Alterations in oligodendrocyte proteins, calcium homeostasis and new potential markers in schizophrenia anterior temporal lobe are revealed by shotgun proteome analysis. Martins-de-Souza D, et al. J Neural Transm, 2009 Mar. PMID 19034380.

Images

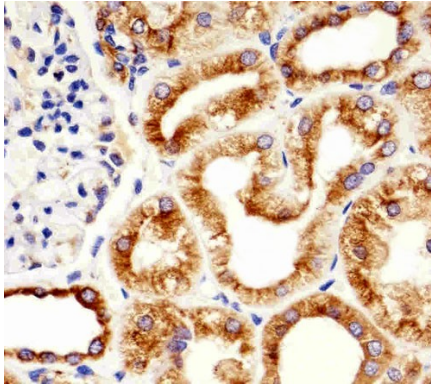
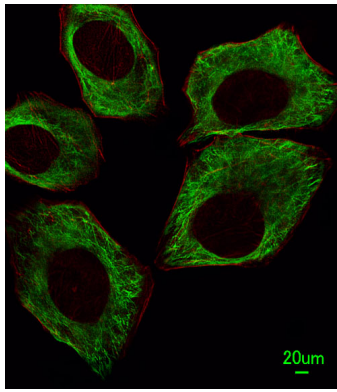


Western blot analysis of lysates from mouse brain tissue, HeLa, Y79, CEM, rat PC-12 cell line (from left to right), using TBB5 Antibody (Cat. #AW5051). AW5051 was diluted at 1:1000 at each lane. A goat anti-mouse IgG H&L (HRP) at 1:10000 dilution was used as the secondary antibody.



Formalin-fixed and paraffin-embedded human testis reacted with TBB5 Antibody, which was peroxidase-conjugated to the secondary antibody, followed by DAB staining. This data demonstrates the use of this antibody for immunohistochemistry; clinical relevance has not been evaluated.

Immunofluorescent analysis of A549 cells, using TBB5 Antibody (Cat. #AW5051). AW5051 was diluted at 1 : 25 dilution. Dylight Fluor 488-conjugated goat anti-mouse IgG at 1:400 dilution was used as the secondary antibody (green). Cytoplasmic actin was counterstained with Dylight Fluor® 554 (red) conjugated Phalloidin (red).



Immunohistochemical analysis of paraffin-embedded H.kidney section using TBB5 Antibody(Cat#AW5051). AW5051 was diluted at 1:25 dilution. A peroxidase-conjugated goat anti-mouse IgG at 1:400 dilution was used as the secondary antibody, followed by DAB staining.

Please note: All products are 'FOR RESEARCH USE ONLY. NOT FOR USE IN DIAGNOSTIC OR THERAPEUTIC PROCEDURES'.