

# ENO1 Antibody

Mouse Monoclonal Antibody (Mab)

Catalog # AW5060

## Product Information

---

<b>Application</b>	IHC-P, WB
<b>Primary Accession</b>	<a href="#">P06733</a>
<b>Reactivity</b>	Human, Mouse
<b>Predicted</b>	Rat
<b>Host</b>	Mouse
<b>Clonality</b>	Monoclonal
<b>Calculated MW</b>	47169
<b>Isotype</b>	IgG2b,k
<b>Antigen Source</b>	Human

## Additional Information

---

<b>Gene ID</b>	2023
<b>Antigen Region</b>	1-415
<b>Other Names</b>	ENO1; ENO1L1; MBPB1; MPB1; Alpha-enolase; Alpha-enolase; 2-phospho-D-glycerate hydro-lyase; Alpha-enolase; C-myc promoter-binding protein; Alpha-enolase; Enolase 1; Alpha-enolase; MBP-1; Alpha-enolase; MPB-1; Alpha-enolase; Non-neural enolase; Alpha-enolase; Phosphopyruvate hydratase; Alpha-enolase; Plasminogen-binding protein
<b>Dilution</b>	IHC-P~~1:100~500 WB~~1:1000
<b>Target/Specificity</b>	Purified His-tagged ENO1 protein was used to produced this monoclonal antibody.
<b>Format</b>	Purified monoclonal antibody supplied in PBS with 0.09% (W/V) sodium azide. This antibody is purified through a protein G column, followed by dialysis against PBS.
<b>Storage</b>	Maintain refrigerated at 2-8°C for up to 2 weeks. For long term storage store at -20°C in small aliquots to prevent freeze-thaw cycles.
<b>Precautions</b>	ENO1 Antibody is for research use only and not for use in diagnostic or therapeutic procedures.

## Protein Information

---

<b>Name</b>	ENO1
-------------	------

<b>Synonyms</b>	ENO1L1, MBPB1, MPB1
<b>Function</b>	Glycolytic enzyme the catalyzes the conversion of 2- phosphoglycerate to phosphoenolpyruvate (PubMed: <a href="#">1369209</a> , PubMed: <a href="#">29775581</a> ). In addition to glycolysis, involved in various processes such as growth control, hypoxia tolerance and allergic responses (PubMed: <a href="#">10802057</a> , PubMed: <a href="#">12666133</a> , PubMed: <a href="#">2005901</a> , PubMed: <a href="#">29775581</a> ). May also function in the intravascular and pericellular fibrinolytic system due to its ability to serve as a receptor and activator of plasminogen on the cell surface of several cell-types such as leukocytes and neurons (PubMed: <a href="#">12666133</a> ). Stimulates immunoglobulin production (PubMed: <a href="#">1369209</a> ).
<b>Cellular Location</b>	Cytoplasm. Cell membrane. Cytoplasm, myofibril, sarcomere, M line. Note=Can translocate to the plasma membrane in either the homodimeric (alpha/alpha) or heterodimeric (alpha/gamma) form. ENO1 is localized to the M line
<b>Tissue Location</b>	The alpha/alpha homodimer is expressed in embryo and in most adult tissues. The alpha/beta heterodimer and the beta/beta homodimer are found in striated muscle, and the alpha/gamma heterodimer and the gamma/gamma homodimer in neurons

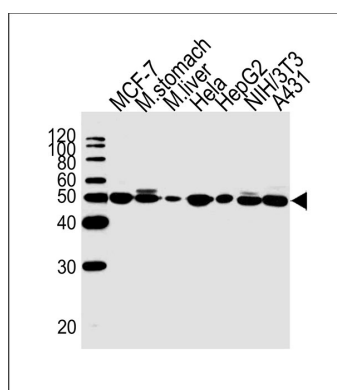
## Background

Multifunctional enzyme that, as well as its role in glycolysis, plays a part in various processes such as growth control, hypoxia tolerance and allergic responses. May also function in the intravascular and pericellular fibrinolytic system due to its ability to serve as a receptor and activator of plasminogen on the cell surface of several cell-types such as leukocytes and neurons. Stimulates immunoglobulin production. MBP1 binds to the myc promoter and acts as a transcriptional repressor. May be a tumor suppressor.

## References

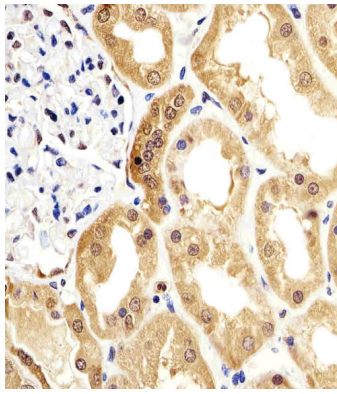
Giallongo A., et al. Proc. Natl. Acad. Sci. U.S.A. 83:6741-6745(1986).  
Giallongo A., et al. Eur. J. Biochem. 190:567-573(1990).  
Ray R., et al. Mol. Cell. Biol. 11:2154-2161(1991).  
Walter M., et al. J. Autoimmun. 8:931-945(1995).  
Kalnine N., et al. Submitted (MAY-2003) to the EMBL/GenBank/DDBJ databases.

## Images



Western blot analysis of lysates from MCF-7 cell line, mouse stomach, mouse liver tissue lysate, Hela, HepG2, NIH/3T3, A431 cell line (from left to right), using ENO1 Antibody (Cat. #AW5060). AW5060 was diluted at 1:1000 at each lane. A goat anti-mouse IgG H&L (HRP) at 1:10000 dilution was used as the secondary antibody. Lysates at 20ug per lane.

Immunohistochemical analysis of paraffin-embedded H. kideny section using ENO1 Antibody (Cat#AW5060). AW5060 was diluted at 1:25 dilution. A undiluted



biotinylated goat polyvalent antibody was used as the secondary, followed by DAB staining.

Please note: All products are 'FOR RESEARCH USE ONLY. NOT FOR USE IN DIAGNOSTIC OR THERAPEUTIC PROCEDURES'.