

CRTAP Antibody (N-term)

Affinity Purified Rabbit Polyclonal Antibody (Pab)

Catalog # AW5097

Product Information

Application	IF, WB
Primary Accession	O75718
Other Accession	NP_006362.1
Reactivity	Human
Predicted	Mouse
Host	Rabbit
Clonality	Polyclonal
Calculated MW	46562
Isotype	Rabbit IgG
Antigen Source	HUMAN

Additional Information

Gene ID	10491
Antigen Region	31-59
Other Names	CRTAP; CASP; Cartilage-associated protein
Dilution	IF~~1:25 WB~~1:1000
Target/Specificity	This CRTAP antibody is generated from rabbits immunized with a KLH conjugated synthetic peptide between 31-59 amino acids from the N-terminal region of human CRTAP.
Format	Purified polyclonal antibody supplied in PBS with 0.09% (W/V) sodium azide. This antibody is purified through a protein A column, followed by peptide affinity purification.
Storage	Maintain refrigerated at 2-8°C for up to 2 weeks. For long term storage store at -20°C in small aliquots to prevent freeze-thaw cycles.
Precautions	CRTAP Antibody (N-term) is for research use only and not for use in diagnostic or therapeutic procedures.

Protein Information

Name	CRTAP
Synonyms	CASP

Function	Necessary for efficient 3-hydroxylation of fibrillar collagen prolyl residues.
Cellular Location	Secreted, extracellular space, extracellular matrix
Tissue Location	Found in articular chondrocytes. Expressed in a variety of tissues

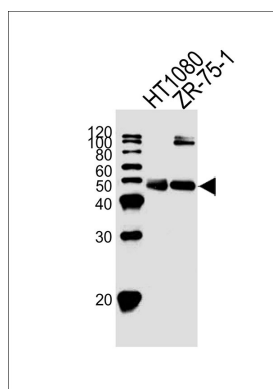
Background

The protein encoded by this gene is similar to the chicken and mouse CRTAP genes. The encoded protein is a scaffolding protein that may influence the activity of at least one member of the cytohesin/ARNO family in response to specific cellular stimuli. Defects in this gene are associated with osteogenesis imperfecta, a connective tissue disorder characterized by bone fragility and low bone mass.

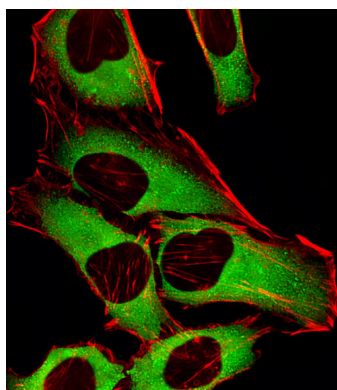
References

Morello, R., et al. Curr Osteoporos Rep 8(2):77-83(2010)
 Li, G.H., et al. Osteoporos Int 21(6):1009-1020(2010)
 Fratzl-Zelman, N., et al. Bone 46(3):820-826(2010)
 Chang, W., et al. Hum. Mol. Genet. 19(2):223-234(2010)
 Marini, J.C., et al. Cell Tissue Res. 339(1):59-70(2010)

Images



Western blot analysis of lysates from HT1080,ZR-75-1 cell line (from left to right), using CRTAP Antibody (N-term)(Cat. #AW5097). AW5097 was diluted at 1:1000 at each lane. A goat anti-rabbit IgG H&L(HRP) at 1:10000 dilution was used as the secondary antibody.



Fluorescent image of HeLa cells stained with CRTAP Antibody (N-term)(Cat#AW5097). AW5097 was diluted at 1:25 dilution. An Alexa Fluor 488-conjugated goat anti-rabbit IgG at 1:400 dilution was used as the secondary antibody (green). Cytoplasmic actin was counterstained with Alexa Fluor® 555 conjugated with Phalloidin (red).

Please note: All products are 'FOR RESEARCH USE ONLY. NOT FOR USE IN DIAGNOSTIC OR THERAPEUTIC PROCEDURES'.