

HSF2 Antibody (Center)

Affinity Purified Rabbit Polyclonal Antibody (Pab)

Catalog # AW5101

Product Information

Application	WB
Primary Accession	Q03933
Other Accession	NP_004497.1
Reactivity	Mouse, Human
Predicted	Mouse
Host	Rabbit
Clonality	Polyclonal
Calculated MW	60348
Isotype	Rabbit IgG
Antigen Source	HUMAN

Additional Information

Gene ID	3298
Antigen Region	216-245
Other Names	HSF2; HSTF2; Heat shock factor protein 2; Heat shock transcription factor 2
Dilution	WB~~1:1000
Target/Specificity	This HSF2 antibody is generated from rabbits immunized with a KLH conjugated synthetic peptide between 216-245 amino acids from the Central region of human HSF2.
Format	Purified polyclonal antibody supplied in PBS with 0.09% (W/V) sodium azide. This antibody is purified through a protein A column, followed by peptide affinity purification.
Storage	Maintain refrigerated at 2-8°C for up to 2 weeks. For long term storage store at -20°C in small aliquots to prevent freeze-thaw cycles.
Precautions	HSF2 Antibody (Center) is for research use only and not for use in diagnostic or therapeutic procedures.

Protein Information

Name	HSF2
Synonyms	HSTF2

Function	DNA-binding protein that specifically binds heat shock promoter elements (HSE) and activates transcription. In higher eukaryotes, HSF is unable to bind to the HSE unless the cells are heat shocked.
Cellular Location	Cytoplasm. Nucleus. Note=Cytoplasmic during normal growth and moves to the nucleus upon activation

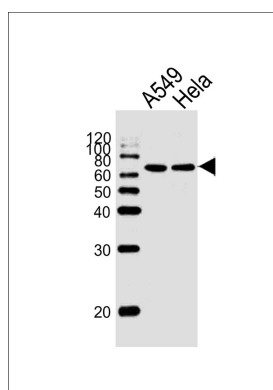
Background

HSF2, as well as the related gene HSF1, encodes a protein that binds specifically to the heat-shock element and has homology to HSFs of other species. Heat shock transcription factors activate heat-shock response genes under conditions of heat or other stresses. Although the names HSF1 and HSF2 were chosen for historical reasons, these peptides should be referred to as heat-shock transcription factors.

References

Rose, J.E., et al. Mol. Med. 16 (7-8), 247-253 (2010) :
Xing, H., et al. Cell Stress Chaperones 15(3):301-308(2010)
Sandqvist, A., et al. Mol. Biol. Cell 20(5):1340-1347(2009)
Tateishi, Y., et al. J. Biol. Chem. 284(4):2435-2447(2009)
Vieira, A.R., et al. Genet. Med. 10(9):668-674(2008)

Images



Western blot analysis of lysates from A549, HeLa cell line (from left to right), using HSF2 Antibody (Center)(Cat. #AW5101). AW5101 was diluted at 1:1000 at each lane. A goat anti-rabbit IgG H&L(HRP) at 1:10000 dilution was used as the secondary antibody.

Please note: All products are 'FOR RESEARCH USE ONLY. NOT FOR USE IN DIAGNOSTIC OR THERAPEUTIC PROCEDURES'.