

PITPNA Antibody (C-term)

Affinity Purified Rabbit Polyclonal Antibody (Pab)

Catalog # AW5110

Product Information

Application	IHC-P, WB
Primary Accession	Q00169
Other Accession	P16446 , P48738 , P53810 , Q2HJ54
Reactivity	Human, Rat, Mouse
Predicted	Rabbit, Bovine
Host	Rabbit
Clonality	Polyclonal
Calculated MW	31806
Isotype	Rabbit IgG
Antigen Source	Human

Additional Information

Gene ID	5306
Antigen Region	243-270
Other Names	Phosphatidylinositol transfer protein alpha isoform;PITPN; Phosphatidylinositol transfer protein alpha isoform
Dilution	IHC-P~~1:100~500 WB~~1:1000
Target/Specificity	This PITPNA antibody is generated from rabbits immunized with a KLH conjugated synthetic peptide between 243-270 amino acids from the C-terminal region of human PITPNA.
Format	Purified polyclonal antibody supplied in PBS with 0.09% (W/V) sodium azide. This antibody is purified through a protein A column, followed by peptide affinity purification.
Storage	Maintain refrigerated at 2-8°C for up to 2 weeks. For long term storage store at -20°C in small aliquots to prevent freeze-thaw cycles.
Precautions	PITPNA Antibody (C-term) is for research use only and not for use in diagnostic or therapeutic procedures.

Protein Information

Name	PITPNA
Synonyms	PITPN

Function	Catalyzes the transfer of phosphatidylinositol (PI) and phosphatidylcholine (PC) between membranes (PubMed: 10531358 , PubMed: 14962392 , PubMed: 15522822 , PubMed: 18636990 , PubMed: 22822086). Shows a preference for PI and PC containing shorter saturated or monosaturated acyl chains at the sn-1 and sn-2 positions (PubMed: 15522822 , PubMed: 22822086). Preference order for PC is C16:1 > C16:0 > C18:1 > C18:0 > C20:4 and for PI is C16:1 > C16:0 > C18:1 > C18:0 > C20:4 > C20:3 (PubMed: 22822086).
Cellular Location	Cytoplasm {ECO:0000250 UniProtKB:P53810}. Nucleus {ECO:0000250 UniProtKB:P53810}

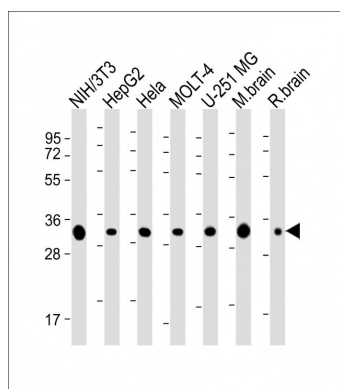
Background

Catalyzes the transfer of PtdIns and phosphatidylcholine between membranes.

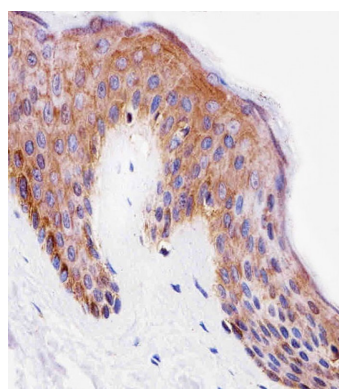
References

Dickeson S.K., et al. Gene 142:301-305(1994).
Tanaka S., et al. Submitted (NOV-1995) to the EMBL/GenBank/DDBJ databases.
Lubec G., et al. Submitted (MAR-2007) to UniProtKB.
Rikova K., et al. Cell 131:1190-1203(2007).
Choudhary C., et al. Science 325:834-840(2009).

Images



All lanes : Anti-PITPNA Antibody (C-term) at 1:2000 dilution Lane 1: NIH/3T3 whole cell lysate Lane 2: HepG2 whole cell lysate Lane 3: Hela whole cell lysate Lane 4: MOLT-4 whole cell lysate Lane 5: U-251 MG whole cell lysate Lane 6: mouse brain lysate Lane 7: rat brain lysate Lysates/proteins at 20 µg per lane. Secondary Goat Anti-Rabbit IgG, (H+L), Peroxidase conjugated at 1/10000 dilution. Predicted band size : 32 kDa Blocking/Dilution buffer: 5% NFDM/TBST.



Immunohistochemical analysis of paraffin-embedded H. skin section using PITPNA Antibody (C-term)(Cat#AW5110). AW5110 was diluted at 1:25 dilution. A undiluted biotinylated goat polyvalent antibody was used as the secondary, followed by DAB staining.

Please note: All products are 'FOR RESEARCH USE ONLY. NOT FOR USE IN DIAGNOSTIC OR THERAPEUTIC PROCEDURES'.