

FBXO28 Antibody (C-term)

Affinity Purified Rabbit Polyclonal Antibody (Pab)

Catalog # AW5112

Product Information

Application	WB
Primary Accession	Q9NVE7
Other Accession	Q8BIG4 , Q2NL16
Reactivity	Human, Mouse
Predicted	Bovine
Host	Rabbit
Clonality	Polyclonal
Calculated MW	41149
Isotype	Rabbit IgG
Antigen Source	Human

Additional Information

Gene ID	23219
Antigen Region	339-368
Other Names	F-box only protein 28; KIAA0483; F-box only protein 28
Dilution	WB~~1:1000
Target/Specificity	This FBXO28 antibody is generated from rabbits immunized with a KLH conjugated synthetic peptide between 339-368 amino acids from the C-terminal region of human FBXO28.
Format	Purified polyclonal antibody supplied in PBS with 0.09% (W/V) sodium azide. This antibody is purified through a protein A column, followed by peptide affinity purification.
Storage	Maintain refrigerated at 2-8°C for up to 2 weeks. For long term storage store at -20°C in small aliquots to prevent freeze-thaw cycles.
Precautions	FBXO28 Antibody (C-term) is for research use only and not for use in diagnostic or therapeutic procedures.

Protein Information

Name	FBXO28
Synonyms	CENP-30 {ECO:0000303 PubMed:20813266}, K

Function Probably recognizes and binds to some phosphorylated proteins and promotes their ubiquitination and degradation.

Cellular Location Chromosome, centromere, kinetochore

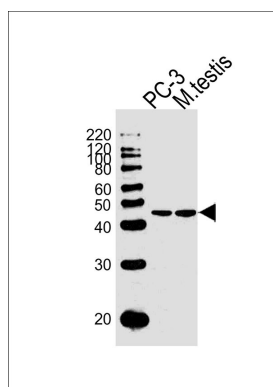
Background

Probably recognizes and binds to some phosphorylated proteins and promotes their ubiquitination and degradation (By similarity).

References

Ota T., et al. Nat. Genet. 36:40-45(2004).
Gregory S.G., et al. Nature 441:315-321(2006).
Seki N., et al. DNA Res. 4:345-349(1997).
Olsen J.V., et al. Cell 127:635-648(2006).
Dephoure N., et al. Proc. Natl. Acad. Sci. U.S.A. 105:10762-10767(2008).

Images



Western blot analysis of lysates from mouse brain tissue and MCF-7 cell line (from left to right), using FBXO28 Antibody (C-term)(Cat. #AW5112). AW5112 was diluted at 1:1000 at each lane. A goat anti-rabbit IgG H&L(HRP) at 1:10000 dilution was used as the secondary antibody. Lysates at 20ug per lane.

Please note: All products are 'FOR RESEARCH USE ONLY. NOT FOR USE IN DIAGNOSTIC OR THERAPEUTIC PROCEDURES'.