

CABLES2 Antibody (Center)

Affinity Purified Rabbit Polyclonal Antibody (Pab)

Catalog # AW5114

Product Information

Application	WB
Primary Accession	Q9BTV7
Other Accession	Q8K3M5
Reactivity	Mouse, Human
Host	Rabbit
Clonality	Polyclonal
Calculated MW	52235
Isotype	Rabbit IgG
Antigen Source	Human

Additional Information

Gene ID	81928
Antigen Region	182-210
Other Names	CABLES2;C20orf150; CDK5 and ABL1 enzyme substrate 2; CDK5 and ABL1 enzyme substrate 2; Interactor with CDK3 2
Dilution	WB~~1:1000
Target/Specificity	This CABLES2 antibody is generated from rabbits immunized with a KLH conjugated synthetic peptide between 182-210 amino acids from the Central region of human CABLES2.
Format	Purified polyclonal antibody supplied in PBS with 0.09% (W/V) sodium azide. This antibody is purified through a protein A column, followed by peptide affinity purification.
Storage	Maintain refrigerated at 2-8°C for up to 2 weeks. For long term storage store at -20°C in small aliquots to prevent freeze-thaw cycles.
Precautions	CABLES2 Antibody (Center) is for research use only and not for use in diagnostic or therapeutic procedures.

Protein Information

Name	CABLES2
Synonyms	C20orf150

Function

Unknown. Probably involved in G1-S cell cycle transition.

Background

Unknown. Probably involved in G1-S cell cycle transition.

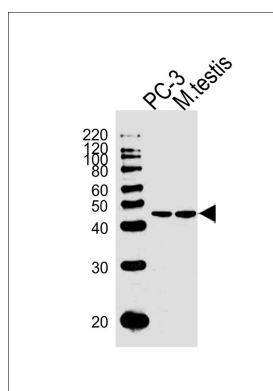
References

Deloukas P., et al. Nature 414:865-871(2001).

Daub H., et al. Mol. Cell 31:438-448(2008).

Oppermann F.S., et al. Mol. Cell. Proteomics 8:1751-1764(2009).

Images



Western blot analysis of lysates from PC-3 cell line and mouse testis tissue(from left to right), using CABLES2Antibody(Center)(Cat. #AW5114). AW5114 was diluted at 1:1000 at each lane. A goat anti-rabbit IgG H&L(HRP) at 1:10000 dilution was used as the secondary antibody. Lysates at 20ug per lane.

Please note: All products are 'FOR RESEARCH USE ONLY. NOT FOR USE IN DIAGNOSTIC OR THERAPEUTIC PROCEDURES'.