

SIRPB1 Antibody (N-term)

Affinity Purified Rabbit Polyclonal Antibody (Pab)

Catalog # AW5117

Product Information

Application	IHC-P, WB
Primary Accession	Q5TFQ8
Reactivity	Human
Host	Rabbit
Clonality	Polyclonal
Calculated MW	43359
Isotype	Rabbit IgG
Antigen Source	Human

Additional Information

Gene ID	10326
Antigen Region	17-43
Other Names	SIRPB1;Signal-regulatory protein beta-1 isoform 3
Dilution	IHC-P~~1:100~500 WB~~1:1000
Target/Specificity	This SIRPB1 antibody is generated from rabbits immunized with a KLH conjugated synthetic peptide between 17-43 amino acids from the N-terminal region of human SIRPB1.
Format	Purified polyclonal antibody supplied in PBS with 0.09% (W/V) sodium azide. This antibody is purified through a protein A column, followed by peptide affinity purification.
Storage	Maintain refrigerated at 2-8°C for up to 2 weeks. For long term storage store at -20°C in small aliquots to prevent freeze-thaw cycles.
Precautions	SIRPB1 Antibody (N-term) is for research use only and not for use in diagnostic or therapeutic procedures.

Protein Information

Name	SIRPB1
Function	Immunoglobulin-like cell surface receptor involved in the negative regulation of receptor tyrosine kinase-coupled signaling processes.
Cellular Location	Membrane; Single-pass type I membrane protein.

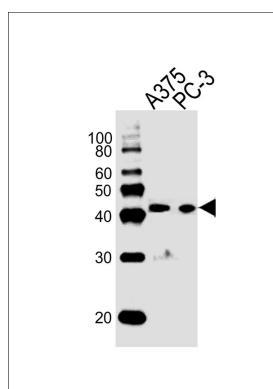
Background

Immunoglobulin-like cell surface receptor involved in the negative regulation of receptor tyrosine kinase-coupled signaling processes (By similarity).

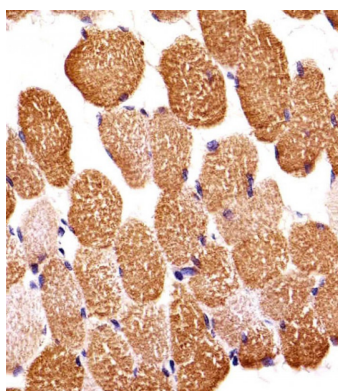
References

Ota T., et al. Nat. Genet. 36:40-45(2004).
Bechtel S., et al. BMC Genomics 8:399-399(2007).
Deloukas P., et al. Nature 414:865-871(2001).
Hatherley D., et al. Mol. Cell 31:266-277(2008).

Images



Western blot analysis of lysates from A375, PC-3 cell line (from left to right), using SIRPB1 Antibody (N-term) (Cat. #AW5117). AW5117 was diluted at 1:1000 at each lane. A goat anti-rabbit IgG H&L (HRP) at 1:10000 dilution was used as the secondary antibody. Lysates at 20 µg per lane.



Immunohistochemical analysis of paraffin-embedded H. skeletal muscle section using SIRPB1 Antibody (N-term) (Cat. #AW5117). AW5117 was diluted at 1:25 dilution. A undiluted biotinylated goat polyvalent antibody was used as the secondary, followed by DAB staining.

Please note: All products are 'FOR RESEARCH USE ONLY. NOT FOR USE IN DIAGNOSTIC OR THERAPEUTIC PROCEDURES'.