

ZNF560 Antibody (Center)

Affinity Purified Rabbit Polyclonal Antibody (Pab)

Catalog # AW5120

Product Information

Application	WB
Primary Accession	Q96MR9
Reactivity	Human
Host	Rabbit
Clonality	Polyclonal
Calculated MW	91121
Isotype	Rabbit IgG
Antigen Source	Human

Additional Information

Gene ID	147741
Antigen Region	301-325
Other Names	ZNF560;Zinc finger protein 560
Dilution	WB~~1:1000
Target/Specificity	This ZNF560 antibody is generated from rabbits immunized with a KLH conjugated synthetic peptide between 301-325 amino acids from the Central region of human ZNF560.
Format	Purified polyclonal antibody supplied in PBS with 0.09% (W/V) sodium azide. This antibody is purified through a protein A column, followed by peptide affinity purification.
Storage	Maintain refrigerated at 2-8°C for up to 2 weeks. For long term storage store at -20°C in small aliquots to prevent freeze-thaw cycles.
Precautions	ZNF560 Antibody (Center) is for research use only and not for use in diagnostic or therapeutic procedures.

Protein Information

Name	ZNF560
Function	May be involved in transcriptional regulation.
Cellular Location	Nucleus.

Background

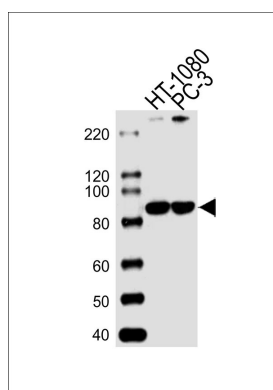
May be involved in transcriptional regulation.

References

Ota T., et al. Nat. Genet. 36:40-45(2004).

Sjoeblom T., et al. Science 314:268-274(2006).

Images



Western blot analysis of lysates from HT-1080,PC-3 cell line (from left to right), using ZNF560 Antibody (Center)(Cat. #AW5120). AW5120 was diluted at 1:1000 at each lane. A goat anti-rabbit IgG H&L(HRP) at 1:10000 dilution was used as the secondary antibody.

Please note: All products are 'FOR RESEARCH USE ONLY. NOT FOR USE IN DIAGNOSTIC OR THERAPEUTIC PROCEDURES'.