

PDCL Antibody (N-term)

Purified Rabbit Polyclonal Antibody (Pab)

Catalog # AW5123

Product Information

Application	IHC-P, WB
Primary Accession	Q13371
Other Accession	Q63737 , Q9DBX2 , Q2HJA9
Reactivity	Human
Predicted	Mouse, Rat, Bovine
Host	Rabbit
Clonality	Polyclonal
Calculated MW	34282
Isotype	Rabbit IgG
Antigen Source	HUMAN

Additional Information

Gene ID	5082
Antigen Region	1-30
Other Names	Phosducin-like protein, PHLP, PDCL, PHLOP1, PhLP1
Dilution	IHC-P~~1:100~500 WB~~1:1000
Target/Specificity	This PDCL antibody is generated from a rabbit immunized with a KLH conjugated synthetic peptide between 1-30 amino acids from the N-terminal region of human PDCL.
Format	Purified polyclonal antibody supplied in PBS with 0.09% (W/V) sodium azide. This antibody is purified through a protein A column, followed by peptide affinity purification.
Storage	Maintain refrigerated at 2-8°C for up to 2 weeks. For long term storage store at -20°C in small aliquots to prevent freeze-thaw cycles.
Precautions	PDCL Antibody (N-term) is for research use only and not for use in diagnostic or therapeutic procedures.

Protein Information

Name	PDCL
Synonyms	PHLOP1, PhLP1

Function	Acts as a positive regulator of hedgehog signaling and regulates ciliary function. [Isoform 2]: Acts as a negative regulator of heterotrimeric G proteins assembly by trapping the preloaded G beta subunits inside the CCT chaperonin.
Cellular Location	Cell projection, cilium {ECO:0000250 UniProtKB:Q9DBX2}

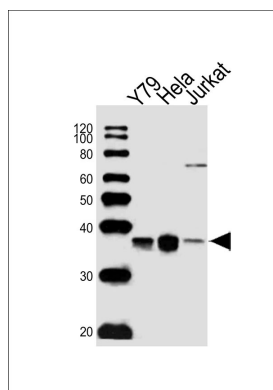
Background

Isoform 1: Functions as a co-chaperone for CCT in the assembly of heterotrimeric G protein complexes, facilitates the assembly of both Gbeta-Ggamma and RGS-Gbeta5 heterodimers.

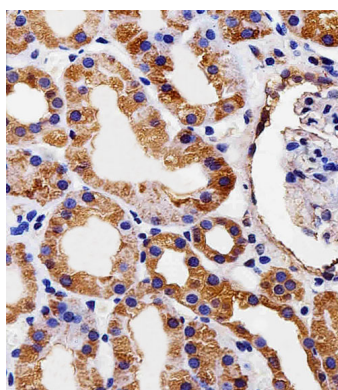
References

Lazarov M.E.,et al.Submitted (OCT-1997) to the EMBL/GenBank/DDBJ databases.
Wiemann S.,et al.Genome Res. 11:422-435(2001).
Ota T.,et al.Nat. Genet. 36:40-45(2004).
Humphray S.J.,et al.Nature 429:369-374(2004).
Mural R.J.,et al.Submitted (JUL-2005) to the EMBL/GenBank/DDBJ databases.

Images



Western blot analysis of lysates from Y79, HeLa, Jurkat cell line (from left to right), using PDCL Antibody (N-term)(Cat. #AW5123). AW5123 was diluted at 1:1000 at each lane. A goat anti-rabbit IgG H&L(HRP) at 1:10000 dilution was used as the secondary antibody. Lysates at 20ug per lane.



Immunohistochemical analysis of paraffin-embedded H. kidney section using PDCL Antibody (N-term)(Cat#AW5123). AW5123 was diluted at 1:25 dilution. A peroxidase-conjugated goat anti-rabbit IgG at 1:400 dilution was used as the secondary antibody, followed by DAB staining.

Please note: All products are 'FOR RESEARCH USE ONLY. NOT FOR USE IN DIAGNOSTIC OR THERAPEUTIC PROCEDURES'.