

# TUBA1C Antibody (N-term)

Purified Rabbit Polyclonal Antibody (Pab)

Catalog # AW5132

## Product Information

---

<b>Application</b>	FC, WB
<b>Primary Accession</b>	<a href="#">Q9BQE3</a>
<b>Other Accession</b>	<a href="#">P08537</a> , <a href="#">Q68FR8</a> , <a href="#">P05214</a> , <a href="#">P06605</a> , <a href="#">Q32KN8</a> , <a href="#">Q6PEY2</a> , <a href="#">Q13748</a> , <a href="#">P06603</a> , <a href="#">P02552</a> , <a href="#">Q2HJ86</a> , <a href="#">Q6AYZ1</a> , <a href="#">P68373</a> , <a href="#">P68365</a> , <a href="#">Q3ZCJ7</a> , <a href="#">Q6P9V9</a> , <a href="#">Q2XVP4</a> , <a href="#">P05213</a> , <a href="#">Q4R538</a> , <a href="#">P68363</a> , <a href="#">P68361</a> , <a href="#">P81947</a> , <a href="#">P68370</a> , <a href="#">P02550</a> , <a href="#">P68369</a> , <a href="#">Q71U36</a> , <a href="#">P68362</a>
<b>Reactivity</b>	Human, Mouse, Rat
<b>Predicted</b>	Hamster, Monkey, Bovine, Chicken, Drosophila, Xenopus
<b>Host</b>	Rabbit
<b>Clonality</b>	Polyclonal
<b>Calculated MW</b>	49895
<b>Isotype</b>	Rabbit IgG
<b>Antigen Source</b>	HUMAN

## Additional Information

---

<b>Gene ID</b>	84790
<b>Antigen Region</b>	26-60
<b>Other Names</b>	Tubulin alpha-1C chain, Alpha-tubulin 6, Tubulin alpha-6 chain, TUBA1C, TUBA6
<b>Dilution</b>	FC~~1:25 WB~~1:1000
<b>Target/Specificity</b>	This TUBA1C antibody is generated from a rabbit immunized with a KLH conjugated synthetic peptide between 26-60 amino acids from the N-terminal region of human TUBA1C.
<b>Format</b>	Purified polyclonal antibody supplied in PBS with 0.09% (W/V) sodium azide. This antibody is purified through a protein A column, followed by peptide affinity purification.
<b>Storage</b>	Maintain refrigerated at 2-8°C for up to 2 weeks. For long term storage store at -20°C in small aliquots to prevent freeze-thaw cycles.
<b>Precautions</b>	TUBA1C Antibody (N-term) is for research use only and not for use in diagnostic or therapeutic procedures.

## Protein Information

---

<b>Name</b>	TUBA1C
-------------	--------

## Synonyms

TUBA6

## Function

Tubulin is the major constituent of microtubules, a cylinder consisting of laterally associated linear protofilaments composed of alpha- and beta-tubulin heterodimers. Microtubules grow by the addition of GTP-tubulin dimers to the microtubule end, where a stabilizing cap forms. Below the cap, tubulin dimers are in GDP-bound state, owing to GTPase activity of alpha-tubulin.

## Cellular Location

Cytoplasm, cytoskeleton.

## Background

Tubulin is the major constituent of microtubules. It binds two moles of GTP, one at an exchangeable site on the beta chain and one at a non-exchangeable site on the alpha chain.

## References

Lubec G.,et al.Submitted (MAR-2007) to UniProtKB.

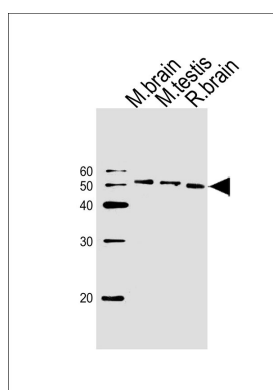
Olsen J.V.,et al.Cell 127:635-648(2006).

Daub H.,et al.Mol. Cell 31:438-448(2008).

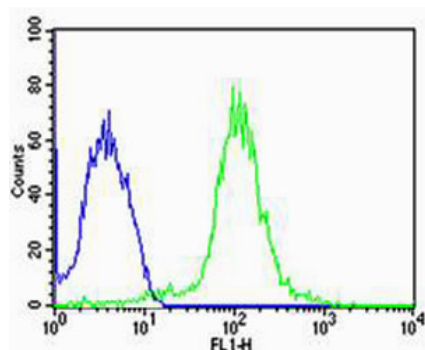
Dephoure N.,et al.Proc. Natl. Acad. Sci. U.S.A. 105:10762-10767(2008).

Gauci S.,et al.Anal. Chem. 81:4493-4501(2009).

## Images



Western blot analysis of lysates from mouse brain, mouse testis, rat brain tissue (from left to right), using TUBA1C Antibody (N-term)(Cat. #AW5132). AW5132 was diluted at 1:1000 at each lane. A goat anti-rabbit IgG H&L(HRP) at 1:10000 dilution was used as the secondary antibody.



Flow cytometric analysis of MCF-7 cells using TUBA1C Antibody (N-term)(green, Cat#AW5132) compared to an isotype control of rabbit IgG(blue). AW5132 was diluted at 1:25 dilution. An Alexa Fluor® 488 goat anti-rabbit IgG at 1:400 dilution was used as the secondary antibody.

Please note: All products are 'FOR RESEARCH USE ONLY. NOT FOR USE IN DIAGNOSTIC OR THERAPEUTIC PROCEDURES'.