

DFFB Antibody (Center)

Purified Rabbit Polyclonal Antibody (Pab)

Catalog # AW5135

Product Information

Application	IHC-P, FC, WB
Primary Accession	O76075
Reactivity	Human
Predicted	Mouse, Rat
Host	Rabbit
Clonality	polyclonal
Calculated MW	39110
Isotype	Rabbit IgG
Antigen Source	HUMAN

Additional Information

Gene ID	1677
Antigen Region	203-238
Other Names	DNA fragmentation factor subunit beta, 3---, Caspase-activated deoxyribonuclease, CAD, Caspase-activated DNase, Caspase-activated nuclease, CPAN, DNA fragmentation factor 40 kDa subunit, DFF-40, DFFB, CAD, DFF2, DFF40
Dilution	IHC-P~~1:100~500 FC~~1:25 WB~~1:1000
Target/Specificity	This DFFB antibody is generated from a rabbit immunized with a KLH conjugated synthetic peptide between 203-238 amino acids from the Central region of human DFFB.
Format	Purified polyclonal antibody supplied in PBS with 0.09% (W/V) sodium azide. This antibody is purified through a protein A column, followed by peptide affinity purification.
Storage	Maintain refrigerated at 2-8°C for up to 2 weeks. For long term storage store at -20°C in small aliquots to prevent freeze-thaw cycles.
Precautions	DFFB Antibody (Center) is for research use only and not for use in diagnostic or therapeutic procedures.

Protein Information

Name	DFFB
-------------	------

Synonyms	CAD, DFF2, DFF40
Function	Nuclease that induces DNA fragmentation and chromatin condensation during apoptosis. Degrades naked DNA and induces apoptotic morphology.
Cellular Location	Cytoplasm. Nucleus.

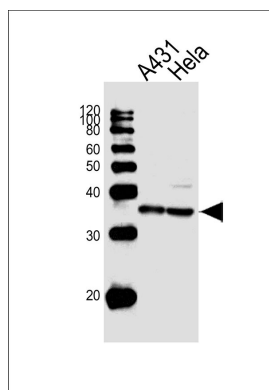
Background

Nuclease that induces DNA fragmentation and chromatin condensation during apoptosis. Degrades naked DNA and induces apoptotic morphology.

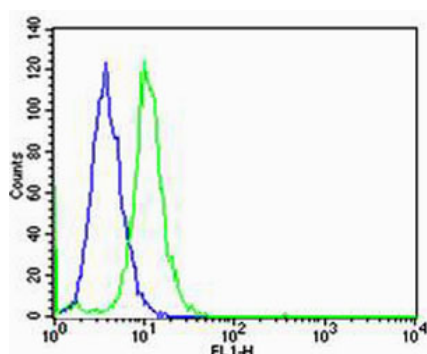
References

Liu X.,et al.Proc. Natl. Acad. Sci. U.S.A. 95:8461-8466(1998).
Mukae N.,et al.Proc. Natl. Acad. Sci. U.S.A. 95:9123-9128(1998).
Halenbeck R.,et al.Curr. Biol. 8:537-540(1998).
Nakagawara A.,et al.Submitted (JUN-1999) to the EMBL/GenBank/DDBJ databases.
Ota T.,et al.Nat. Genet. 36:40-45(2004).

Images

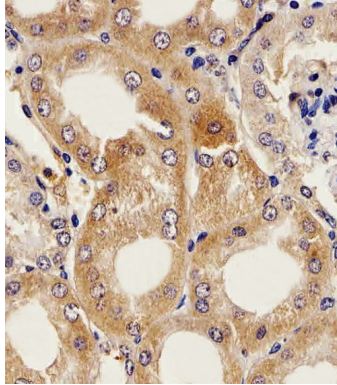
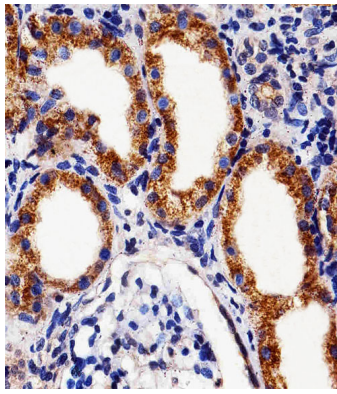


Western blot analysis of lysates from A431,HeLa cell line (from left to right), using DFFB Antibody (Center)(Cat. #AW5135). AW5135 was diluted at 1:1000 at each lane. A goat anti-rabbit IgG H&L(HRP) at 1:10000 dilution was used as the secondary antibody.



Flow cytometric analysis of HeLa cells using DFFB Antibody (Center)(green, Cat#AW5135) compared to an isotype control of rabbit IgG(blue). AW5135 was diluted at 1:25 dilution. An Alexa Fluor® 488 goat anti-rabbit IgG at 1:400 dilution was used as the secondary antibody.

Immunohistochemical analysis of paraffin-embedded H.kidney section using DFFB Antibody (Center)(Cat#AW5135). AW5135 was diluted at 1:25 dilution. A peroxidase-conjugated goat anti-rabbit IgG at 1:400 dilution was used as the secondary antibody, followed by DAB staining.



Immunohistochemical analysis of paraffin-embedded M.kidney section using DFFB Antibody (Center)(Cat#AW5135). AW5135 was diluted at 1:25 dilution. A peroxidase-conjugated goat anti-rabbit IgG at 1:400 dilution was used as the secondary antibody, followed by DAB staining.

Please note: All products are 'FOR RESEARCH USE ONLY. NOT FOR USE IN DIAGNOSTIC OR THERAPEUTIC PROCEDURES'.