

# C21orf33 Antibody (Center)

Purified Rabbit Polyclonal Antibody (Pab)

Catalog # AW5137

## Product Information

---

<b>Application</b>	IF, WB
<b>Primary Accession</b>	<a href="#">P30042</a>
<b>Reactivity</b>	Human
<b>Predicted</b>	Mouse, Rat
<b>Host</b>	Rabbit
<b>Clonality</b>	polyclonal
<b>Calculated MW</b>	28 KDa
<b>Isotype</b>	Rabbit IgG
<b>Antigen Source</b>	HUMAN

## Additional Information

---

<b>Antigen Region</b>	91-124
<b>Other Names</b>	ES1 protein homolog, mitochondrial, Protein GT335, Protein KNP-I, C21orf33, HES1, KNPI
<b>Dilution</b>	IF~~1:25 WB~~ 1:1000
<b>Target/Specificity</b>	This C21orf33 antibody is generated from a rabbit immunized with a KLH conjugated synthetic peptide between 91-124 amino acids from the Central region of human C21orf33.
<b>Format</b>	Purified polyclonal antibody supplied in PBS with 0.09% (W/V) sodium azide. This antibody is purified through a protein A column, followed by peptide affinity purification.
<b>Storage</b>	Maintain refrigerated at 2-8°C for up to 2 weeks. For long term storage store at -20°C in small aliquots to prevent freeze-thaw cycles.
<b>Precautions</b>	C21orf33 Antibody (Center) is for research use only and not for use in diagnostic or therapeutic procedures.

## Protein Information

---

## References

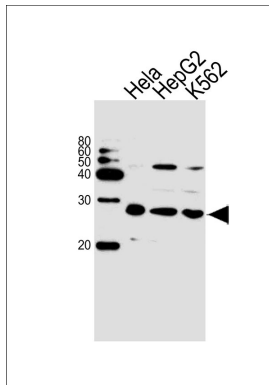
---

Nagamine K.,et al.Biochem. Biophys. Res. Commun. 225:608-616(1996).  
Lafreniere R.G.,et al.Genomics 38:264-272(1996).

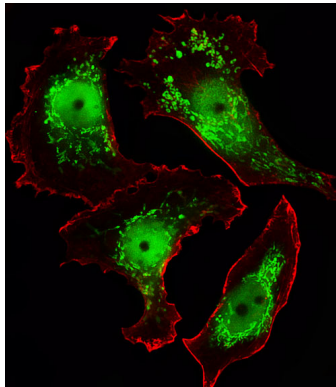
Scott H.S.,et al.Hum. Genet. 99:616-623(1997).  
Hattori M.,et al.Nature 405:311-319(2000).  
Nagamine K.,et al.Genomics 42:528-531(1997).

## Images

---



Western blot analysis of lysates from HeLa, HepG2, K562 cell line (from left to right), using C21orf33 Antibody (Center)(Cat. #AW5137). AW5137 was diluted at 1:1000 at each lane. A goat anti-rabbit IgG H&L(HRP) at 1:10000 dilution was used as the secondary antibody.



Fluorescent image of MCF-7 cells stained with C21orf33 Antibody (Center)(Cat#AW5137). AW5137 was diluted at 1:25 dilution. An Alexa Fluor 488-conjugated goat anti-rabbit IgG at 1:400 dilution was used as the secondary antibody (green). Cytoplasmic actin was counterstained with Alexa Fluor® 555 conjugated with Phalloidin (red).

Please note: All products are 'FOR RESEARCH USE ONLY. NOT FOR USE IN DIAGNOSTIC OR THERAPEUTIC PROCEDURES'.