

# ALDOC Antibody (C-term)

Purified Rabbit Polyclonal Antibody (Pab)

Catalog # AW5145

## Product Information

---

<b>Application</b>	IHC-P, WB
<b>Primary Accession</b>	<a href="#">P09972</a>
<b>Other Accession</b>	<a href="#">P09117</a> , <a href="#">P05063</a> , <a href="#">Q9GKW3</a>
<b>Reactivity</b>	Human, Mouse, Rat
<b>Predicted</b>	Monkey
<b>Host</b>	Rabbit
<b>Clonality</b>	Polyclonal
<b>Calculated MW</b>	39456
<b>Isotype</b>	Rabbit IgG
<b>Antigen Source</b>	HUMAN

## Additional Information

---

<b>Gene ID</b>	230
<b>Antigen Region</b>	300-333
<b>Other Names</b>	ALDOC; ALDC; Fructose-bisphosphate aldolase C; Brain-type aldolase
<b>Dilution</b>	IHC-P~~1:100~500 WB~~1:1000
<b>Target/Specificity</b>	This ALDOC antibody is generated from rabbits immunized with a KLH conjugated synthetic peptide between 300-333 amino acids from the C-terminal region of human ALDOC.
<b>Format</b>	Purified polyclonal antibody supplied in PBS with 0.09% (W/V) sodium azide. This antibody is prepared by Saturated Ammonium Sulfate (SAS) precipitation followed by dialysis against PBS.
<b>Storage</b>	Maintain refrigerated at 2-8°C for up to 2 weeks. For long term storage store at -20°C in small aliquots to prevent freeze-thaw cycles.
<b>Precautions</b>	ALDOC Antibody (C-term) is for research use only and not for use in diagnostic or therapeutic procedures.

## Protein Information

---

<b>Name</b>	ALDOC
<b>Synonyms</b>	ALDC

## Background

---

ALDOC is a member of the fructose-biphosphate aldolase protein family. Expressed specifically in the hippocampus and Purkinje cells of the brain, this protein is a glycolytic enzyme that catalyzes the reversible aldol cleavage of fructose-1,6-biphosphate and fructose 1-phosphate to dihydroxyacetone phosphate and either glyceraldehyde-3-phosphate or glyceraldehyde, respectively.

## References

---

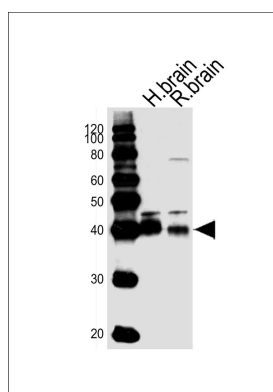
Buono,P.,FEBS Lett. 578 (3), 337-344 (2004)

Buono,P.,Nucleic Acids Res. 16 (10), 4733 (1988)

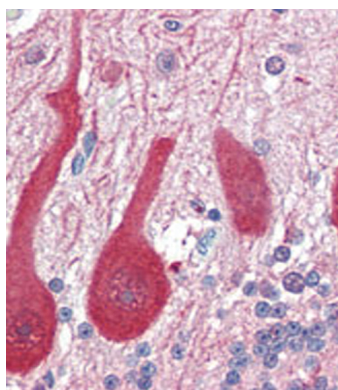
Rottmann,W.H.,Proc. Natl. Acad. Sci. U.S.A. 56 (4), 1275-1282 (1966)

## Images

---



Western blot analysis of lysates from human brain, rat brain, mouse cerebellum tissue lysate (from left to right), using ALDOC Antibody (C-term)(Cat. #AW5145). AW5145 was diluted at 1:1000 at each lane. A goat anti-rabbit IgG H&L(HRP) at 1:10000 dilution was used as the secondary antibody. Lysates at 20ug per lane.



Formalin-fixed and paraffin-embedded human Brain, Cerebellum tissue reacted with ALDOC antibody (C-term) (Cat.#AW5145), which was peroxidase-conjugated to the secondary antibody, followed by AEC staining. This data demonstrates the use of this antibody for immunohistochemistry; clinical relevance has not been evaluated.

Please note: All products are 'FOR RESEARCH USE ONLY. NOT FOR USE IN DIAGNOSTIC OR THERAPEUTIC PROCEDURES'.