

STIP1 Antibody (C-term)

Purified Rabbit Polyclonal Antibody (Pab)

Catalog # AW5146

Product Information

Application	FC, WB
Primary Accession	P31948
Other Accession	Q35814 , Q60864 , Q4R8N7 , O54981 , Q3ZBZ8
Reactivity	Mouse, Rat, Human
Predicted	Hamster, Monkey, Bovine
Host	Rabbit
Clonality	Polyclonal
Calculated MW	62639
Isotype	Rabbit IgG
Antigen Source	HUMAN

Additional Information

Gene ID	10963
Antigen Region	461-488
Other Names	STIP1; Stress-induced-phosphoprotein 1; Hsc70/Hsp90-organizing protein; Renal carcinoma antigen NY-REN-11; Transformation-sensitive protein IEF SSP 3521
Dilution	FC~~1:10~50 WB~~1:1000
Target/Specificity	This STIP1 antibody is generated from rabbits immunized with a KLH conjugated synthetic peptide between 461-488 amino acids from the C-terminal region of human STIP1.
Format	Purified polyclonal antibody supplied in PBS with 0.09% (W/V) sodium azide. This antibody is prepared by Saturated Ammonium Sulfate (SAS) precipitation followed by dialysis against PBS.
Storage	Maintain refrigerated at 2-8°C for up to 2 weeks. For long term storage store at -20°C in small aliquots to prevent freeze-thaw cycles.
Precautions	STIP1 Antibody (C-term) is for research use only and not for use in diagnostic or therapeutic procedures.

Protein Information

Name	STIP1 (HGNC:11387)
-------------	--------------------------------------

Function	Acts as a co-chaperone for HSP90AA1 (PubMed: 27353360). Mediates the association of the molecular chaperones HSPA8/HSC70 and HSP90 (By similarity).
Cellular Location	Cytoplasm {ECO:0000250 UniProtKB:Q60864}. Nucleus {ECO:0000250 UniProtKB:Q60864}. Dynein axonemal particle {ECO:0000250 UniProtKB:Q7ZWU1}

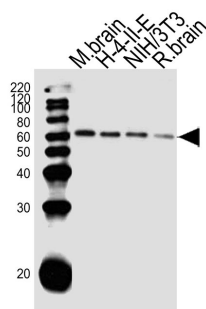
Background

STIP1 mediates the association of the molecular chaperones HSC70 and HSP90 (HSPCA and HSPCB).

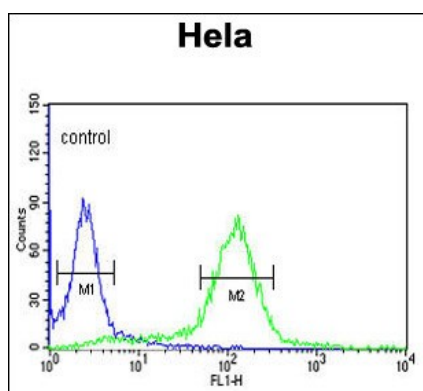
References

Onuoha,S.C., J. Mol. Biol. 379 (4), 732-744 (2008)
 Erlich,R.B., Glia 55 (16), 1690-1698 (2007)

Images



Western blot analysis of lysates from mouse brain tissue, rat H-4-II-E, mouse NIH/3T3 cell line and rat brain tissue lysate(from left to right), using STIP1 Antibody (C-term)(Cat. #AW5146). AW5146 was diluted at 1:1000 at each lane. A goat anti-rabbit IgG H&L(HRP) at 1:10000 dilution was used as the secondary antibody.



STIP1 Antibody (C-term) (Cat. #AW5146) flow cytometric analysis of HeLa cells (right histogram) compared to a negative control cell (left histogram).FITC-conjugated goat-anti-rabbit secondary antibodies were used for the analysis.

Please note: All products are 'FOR RESEARCH USE ONLY. NOT FOR USE IN DIAGNOSTIC OR THERAPEUTIC PROCEDURES'.