

AGR2 Antibody (Center)

Affinity Purified Rabbit Polyclonal Antibody (Pab)
Catalog # AW5165

Product Information

Application	WB
Primary Accession	O95994
Other Accession	O88312 , Q5RZ65
Reactivity	Human
Predicted	Mouse, Zebrafish
Host	Rabbit
Clonality	Polyclonal
Calculated MW	19979
Isotype	Rabbit IgG
Antigen Source	HUMAN

Additional Information

Gene ID	10551
Antigen Region	95-124
Other Names	AGR2; AG2; Anterior gradient protein 2 homolog; HPC8; Secreted cement gland protein XAG-2 homolog
Dilution	WB~~1:1000
Target/Specificity	This AGR2 antibody is generated from rabbits immunized with a KLH conjugated synthetic peptide between 95-124 amino acids from the Central region of human AGR2.
Format	Purified polyclonal antibody supplied in PBS with 0.09% (W/V) sodium azide. This antibody is purified through a protein A column, followed by peptide affinity purification.
Storage	Maintain refrigerated at 2-8°C for up to 2 weeks. For long term storage store at -20°C in small aliquots to prevent freeze-thaw cycles.
Precautions	AGR2 Antibody (Center) is for research use only and not for use in diagnostic or therapeutic procedures.

Protein Information

Name	AGR2
Synonyms	AG2

Function	Required for MUC2 post-transcriptional synthesis and secretion. May play a role in the production of mucus by intestinal cells (By similarity). Proto-oncogene that may play a role in cell migration, cell differentiation and cell growth. Promotes cell adhesion (PubMed: 23274113).
Cellular Location	Secreted. Endoplasmic reticulum {ECO:0000250 UniProtKB:O88312}
Tissue Location	Expressed strongly in trachea, lung, stomach, colon, prostate and small intestine. Expressed weakly in pituitary gland, salivary gland, mammary gland, bladder, appendix, ovary, fetal lung, uterus, pancreas, kidney, fetal kidney, testis, placenta, thyroid gland and in estrogen receptor (ER)-positive breast cancer cell lines

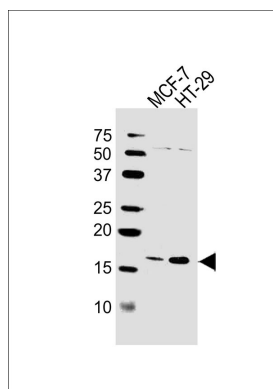
Background

Anterior gradient 2 (AGR2) is known as a cancer cell marker specifically up-regulated in response to depletion of serum and oxygen. AGR2 has been identified as a tumor marker in primary and secondary cancer lesions, and as a marker for detection of circulating tumor cells (CTCs). Elevated levels of AGR2 are known to increase the metastatic potential of cancer cells, but conditions leading to increased expression of AGR2 are not well understood.

References

Zweitzig,D.R., Mol. Cell. Biochem. 306 (1-2), 255-260 (2007) Zhang,Y., Prostate Cancer Prostatic Dis. 10 (3), 293-300 (2007) Fletcher,G.C., Br. J. Cancer 88 (4), 579-585 (2003)

Images



Western blot analysis of lysates from MCF-7,HT-29 cell line (from left to right), using AGR2 Antibody (Center)(Cat. #AW5165). AW5165 was diluted at 1:1000 at each lane. A goat anti-rabbit IgG H&L(HRP) at 1:10000 dilution was used as the secondary antibody.

Please note: All products are 'FOR RESEARCH USE ONLY. NOT FOR USE IN DIAGNOSTIC OR THERAPEUTIC PROCEDURES'.