

GSTP1 Antibody (Center)

Affinity Purified Rabbit Polyclonal Antibody (Pab)

Catalog # AW5183

Product Information

Application	WB
Primary Accession	P09211
Reactivity	Human, Mouse, Rat
Host	Rabbit
Clonality	Polyclonal
Calculated MW	23356
Isotype	Rabbit IgG
Antigen Source	HUMAN

Additional Information

Gene ID	2950
Antigen Region	97-126
Other Names	GSTP1; FAES3; GST3; Glutathione S-transferase P; GST class-pi; GSTP1-1
Dilution	WB~~1:1000
Target/Specificity	This GSTP1 antibody is generated from rabbits immunized with a KLH conjugated synthetic peptide between 97-126 amino acids from the Central region of human GSTP1.
Format	Purified polyclonal antibody supplied in PBS with 0.09% (W/V) sodium azide. This antibody is purified through a protein A column, followed by peptide affinity purification.
Storage	Maintain refrigerated at 2-8°C for up to 2 weeks. For long term storage store at -20°C in small aliquots to prevent freeze-thaw cycles.
Precautions	GSTP1 Antibody (Center) is for research use only and not for use in diagnostic or therapeutic procedures.

Protein Information

Name	GSTP1 (HGNC:4638)
Synonyms	FAES3, GST3
Function	Conjugation of reduced glutathione to a wide number of exogenous and endogenous hydrophobic electrophiles. Involved in the formation of

glutathione conjugates of both prostaglandin A2 (PGA2) and prostaglandin J2 (PGJ2) (PubMed:[9084911](#)). Participates in the formation of novel hepxilin regioisomers (PubMed:[21046276](#)). Negatively regulates CDK5 activity via p25/p35 translocation to prevent neurodegeneration.

Cellular Location

Cytoplasm. Mitochondrion. Nucleus. Note=The 83 N-terminal amino acids function as an uncleaved transit peptide, and arginine residues within it are crucial for mitochondrial localization

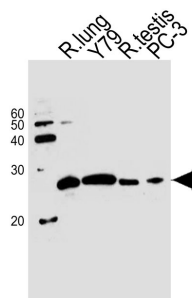
Background

Glutathione S-transferases (GSTs) are a family of enzymes that play an important role in detoxification by catalyzing the conjugation of many hydrophobic and electrophilic compounds with reduced glutathione. Based on their biochemical, immunologic, and structural properties, the soluble GSTs are categorized into 4 main classes: alpha, mu, pi, and theta. This GST family member is a polymorphic gene encoding active, functionally different GSTP1 variant proteins that are thought to function in xenobiotic metabolism and play a role in susceptibility to cancer, and other diseases.

References

Cho,H.J., et.al., Cancer Genet. Cytogenet. 198 (1), 40-46 (2010)
Kanai,M., et.al., Cancer Epidemiol 34 (2), 189-193 (2010)
Davila,S., et.al., Genes Immun. 11 (3), 232-238 (2010)

Images



Western blot analysis of lysates from rat lung tissue,Y79 cell line,rat testis tissue,PC-3 cell line (from left to right), using GSTP1 Antibody (Center)(Cat. #AW5183). AW5183 was diluted at 1:1000 at each lane. A goat anti-rabbit IgG H&L(HRP) at 1:10000 dilution was used as the secondary antibody.Lysates at 20ug per lane.

Please note: All products are 'FOR RESEARCH USE ONLY. NOT FOR USE IN DIAGNOSTIC OR THERAPEUTIC PROCEDURES'.