

NPIPL2 Antibody (C-term)

Affinity Purified Rabbit Polyclonal Antibody (Pab)

Catalog # AW5185

Product Information

Application	WB
Primary Accession	A6NHN6
Reactivity	Human
Host	Rabbit
Clonality	Polyclonal
Calculated MW	51267
Isotype	Rabbit IgG
Antigen Source	Human

Additional Information

Gene ID	440348
Antigen Region	300-327
Other Names	NPIPL2;Nuclear pore complex-interacting protein-like 2
Dilution	WB~~ 1:1000
Target/Specificity	This NPIPL2 antibody is generated from rabbits immunized with a KLH conjugated synthetic peptide between 300-327 amino acids from the C-terminal region of human NPIPL2.
Format	Purified polyclonal antibody supplied in PBS with 0.09% (W/V) sodium azide. This antibody is purified through a protein A column, followed by peptide affinity purification.
Storage	Maintain refrigerated at 2-8°C for up to 2 weeks. For long term storage store at -20°C in small aliquots to prevent freeze-thaw cycles.
Precautions	NPIPL2 Antibody (C-term) is for research use only and not for use in diagnostic or therapeutic procedures.

Protein Information

Name	NPIP15
Synonyms	NPIPL2
Cellular Location	Secreted.

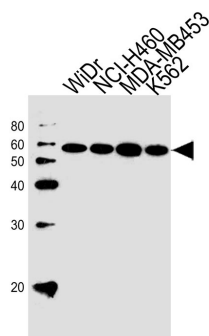
Background

The function of this protein is unknown.

References

Martin J., et al. Nature 432:988-994(2004).

Images



Western blot analysis of lysates from WiDr, NCI-H460, MDA-MB453, K562 cell line (from left to right), using NPIPL2 Antibody (C-term)(Cat. #AW5185). AW5185 was diluted at 1:1000 at each lane. A goat anti-rabbit IgG H&L(HRP) at 1:10000 dilution was used as the secondary antibody.

Please note: All products are 'FOR RESEARCH USE ONLY. NOT FOR USE IN DIAGNOSTIC OR THERAPEUTIC PROCEDURES'.