

CTSD Antibody

Mouse Monoclonal Antibody (Mab)

Catalog # AW5191

Product Information

Application	IHC-P, WB
Primary Accession	P07339
Reactivity	Human
Predicted	Mouse, Bovine
Host	Mouse
Clonality	Monoclonal
Calculated MW	44552
Isotype	IgG1
Antigen Source	Human

Additional Information

Gene ID	1509
Antigen Region	1-402
Other Names	CTSD;CPSD; Cathepsin D; Cathepsin D light chain; Cathepsin D heavy chain
Dilution	IHC-P~~1:100~500 WB~~1:1000
Target/Specificity	Purified His-tagged CTSD protein was used to produced this monoclonal antibody.
Format	Purified monoclonal antibody supplied in PBS with 0.09% (W/V) sodium azide. This antibody is purified through a protein G column, followed by dialysis against PBS.
Storage	Maintain refrigerated at 2-8°C for up to 2 weeks. For long term storage store at -20°C in small aliquots to prevent freeze-thaw cycles.
Precautions	CTSD Antibody is for research use only and not for use in diagnostic or therapeutic procedures.

Protein Information

Name	CTSD
Synonyms	CPSD
Function	Acid protease active in intracellular protein breakdown. Plays a role in APP processing following cleavage and activation by ADAM30 which leads to APP

degradation (PubMed:[27333034](#)). Involved in the pathogenesis of several diseases such as breast cancer and possibly Alzheimer disease.

Cellular Location

Lysosome. Melanosome. Secreted, extracellular space. Note=Identified by mass spectrometry in melanosome fractions from stage I to stage IV. In aortic samples, detected as an extracellular protein loosely bound to the matrix (PubMed:20551380)

Tissue Location

Expressed in the aorta extracellular space (at protein level) (PubMed:20551380). Expressed in liver (at protein level) (PubMed:1426530).

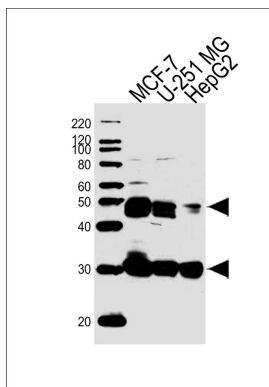
Background

Acid protease active in intracellular protein breakdown. Involved in the pathogenesis of several diseases such as breast cancer and possibly Alzheimer disease.

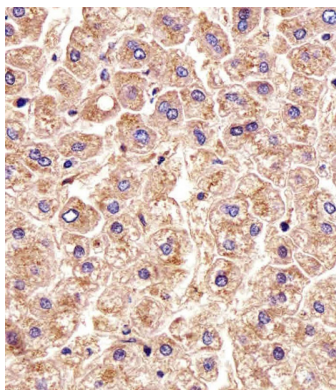
References

Burkard T.R., et al. BMC Syst. Biol. 5:17-17(2011).
Faust P.L., et al. Proc. Natl. Acad. Sci. U.S.A. 82:4910-4914(1985).
Westley B.R., et al. Nucleic Acids Res. 15:3773-3786(1987).
Redecker B., et al. DNA Cell Biol. 10:423-431(1991).
Ebert L., et al. Submitted (JUN-2004) to the EMBL/GenBank/DDBJ databases.

Images



Western blot analysis of lysates from MCF-7, U-251 MG, HepG2 cell line (from left to right), using CTSD Antibody (Cat. #AW5191). AW5191 was diluted at 1:1000 at each lane. A goat anti-mouse IgG H&L (HRP) at 1:10000 dilution was used as the secondary antibody. Lysates at 20ug per lane.



Immunohistochemical analysis of paraffin-embedded H. liver section using CTSD Antibody (Cat#AW5191). AW5191 was diluted at 1:25 dilution. A undiluted biotinylated goat polyvalent antibody was used as the secondary, followed by DAB staining.

Please note: All products are 'FOR RESEARCH USE ONLY. NOT FOR USE IN DIAGNOSTIC OR THERAPEUTIC PROCEDURES'.