

# R Cgref1 Antibody (C-term)

Affinity Purified Rabbit Polyclonal Antibody (Pab)

Catalog # AW5202

## Product Information

---

Application	WB
Primary Accession	<a href="#">P97586</a>
Reactivity	Rat
Host	Rabbit
Clonality	Polyclonal
Calculated MW	30835
Isotype	Rabbit IgG
Antigen Source	Rat

## Additional Information

---

Gene ID	245918
Antigen Region	220-248
Other Names	Cgref1;Cgr11; Cell growth regulator with EF hand domain protein 1; Cell growth regulator with EF hand domain protein 1; Cell growth regulatory gene 11 protein; Cell growth regulator with EF hand domain protein 1; Hydrophobestin
Dilution	WB~~1:1000
Target/Specificity	This RAT Cgref1 antibody is generated from rabbits immunized with a KLH conjugated synthetic peptide between 220-248 amino acids from the C-terminal region of rat Cgref1.
Format	Purified polyclonal antibody supplied in PBS with 0.09% (W/V) sodium azide. This antibody is purified through a protein A column, followed by peptide affinity purification.
Storage	Maintain refrigerated at 2-8°C for up to 2 weeks. For long term storage store at -20°C in small aliquots to prevent freeze-thaw cycles.
Precautions	R Cgref1 Antibody (C-term) is for research use only and not for use in diagnostic or therapeutic procedures.

## Protein Information

---

Name	Cgref1 {ECO:0000312 RGD:620801}
Synonyms	Cgr11

<b>Function</b>	Mediates cell-cell adhesion in a calcium-dependent manner. Able to inhibit growth in several cell lines.
<b>Cellular Location</b>	Secreted.
<b>Tissue Location</b>	Expressed predominantly in whole brain and kidney, with limited expression in heart, lung, liver, and skeletal muscle and no expression in spleen and testis. Also expressed in pituitary gland, adrenal gland, digestive tract, and reproductive organs

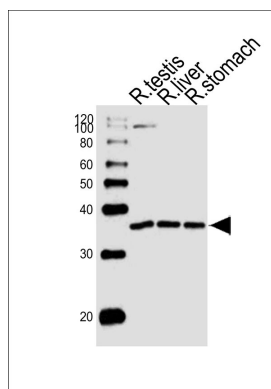
## Background

Mediates cell-cell adhesion in a calcium-dependent manner. Able to inhibit growth in several cell lines.

## References

Madden S.L., et al. Cancer Res. 56:5384-5390(1996).  
 Devnath S., et al. Eur. J. Cell Biol. 88:521-529(2009).

## Images



Western blot analysis of lysates from rat testis, rat liver, rat stomach tissue lysate (from left to right), using RAT Cgref1 Antibody (C-term)(Cat. #AW5202). AW5202 was diluted at 1:1000 at each lane. A goat anti-rabbit IgG H&L(HRP) at 1:10000 dilution was used as the secondary antibody.

Please note: All products are 'FOR RESEARCH USE ONLY. NOT FOR USE IN DIAGNOSTIC OR THERAPEUTIC PROCEDURES'.