

TPT1 Antibody (N-term)

Affinity Purified Rabbit Polyclonal Antibody (Pab)

Catalog # AW5210

Product Information

Application	WB
Primary Accession	P13693
Other Accession	P61288 , NP_003286.1
Reactivity	Mouse, Rat, Human
Host	Rabbit
Clonality	Polyclonal
Calculated MW	19595
Isotype	Rabbit IgG
Antigen Source	HUMAN

Additional Information

Gene ID	7178
Antigen Region	1-30
Other Names	TPT1; Translationally-controlled tumor protein; Fortilin; Histamine-releasing factor; p23
Dilution	WB~~1:1000
Target/Specificity	This TPT1 antibody is generated from rabbits immunized with a KLH conjugated synthetic peptide between 1-30 amino acids from the N-terminal region of human TPT1.
Format	Purified polyclonal antibody supplied in PBS with 0.09% (W/V) sodium azide. This antibody is purified through a protein A column, followed by peptide affinity purification.
Storage	Maintain refrigerated at 2-8°C for up to 2 weeks. For long term storage store at -20°C in small aliquots to prevent freeze-thaw cycles.
Precautions	TPT1 Antibody (N-term) is for research use only and not for use in diagnostic or therapeutic procedures.

Protein Information

Name	TPT1
Function	Involved in calcium binding and microtubule stabilization (PubMed: 12167714 , PubMed: 15162379 , PubMed: 15958728). Acts as a

negative regulator of TSC22D1-mediated apoptosis, via interaction with and destabilization of TSC22D1 protein (PubMed:[18325344](#)).

Cellular Location

Cytoplasm.

Tissue Location

Found in several healthy and tumoral cells including erythrocytes, hepatocytes, macrophages, platelets, keratinocytes, erythroleukemia cells, gliomas, melanomas, hepatoblastomas, and lymphomas. It cannot be detected in kidney and renal cell carcinoma (RCC). Expressed in placenta and prostate

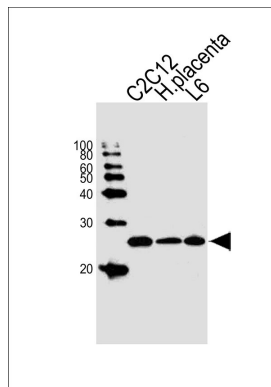
Background

TPT1 is involved in calcium binding and microtubule stabilization.

References

Davila, S., et al. Genes Immun. 11(3):232-238(2010)
Rid, R., et al. J. Steroid Biochem. Mol. Biol. 118 (1-2), 29-40 (2010) :
Ma, Q., et al. J. Proteome Res. 9(1):40-49(2010)
Dong, X., et al. J. Biol. Chem. 284(35):23754-23764(2009)
Wu, P.S., et al. J. Immunol. 183(4):2373-2381(2009)

Images



Western blot analysis of lysates from mouse C2C12 cell line, human placenta tissue lysate, rat L6 cell line (from left to right), using TPT1 Antibody (N-term)(Cat. #AW5210). AW5210 was diluted at 1:1000 at each lane. A goat anti-rabbit IgG H&L(HRP) at 1:10000 dilution was used as the secondary antibody.

Please note: All products are 'FOR RESEARCH USE ONLY. NOT FOR USE IN DIAGNOSTIC OR THERAPEUTIC PROCEDURES'.