

# COPS2 Antibody (N-term)

Affinity Purified Rabbit Polyclonal Antibody (Pab)

Catalog # AW5212

## Product Information

---

<b>Application</b>	IF, IHC-P, WB
<b>Primary Accession</b>	<a href="#">P61201</a>
<b>Other Accession</b>	<a href="#">Q6IR75</a> , <a href="#">P61203</a> , <a href="#">P61202</a> , <a href="#">Q6IQT4</a> , <a href="#">NP_004227.1</a>
<b>Reactivity</b>	Human, Mouse, Rat
<b>Predicted</b>	Zebrafish, Xenopus
<b>Host</b>	Rabbit
<b>Clonality</b>	Polyclonal
<b>Calculated MW</b>	51597
<b>Isotype</b>	Rabbit IgG
<b>Antigen Source</b>	HUMAN

## Additional Information

---

<b>Gene ID</b>	9318
<b>Antigen Region</b>	1-30
<b>Other Names</b>	COPS2; CSN2; TRIP15; COP9 signalosome complex subunit 2; Alien homolog; JAB1-containing signalosome subunit 2; Thyroid receptor-interacting protein 15
<b>Dilution</b>	IF~~1:25 IHC-P~~1:100~500 WB~~1:1000
<b>Target/Specificity</b>	This COPS2 antibody is generated from rabbits immunized with a KLH conjugated synthetic peptide between 1-30 amino acids from the N-terminal region of human COPS2.
<b>Format</b>	Purified polyclonal antibody supplied in PBS with 0.09% (W/V) sodium azide. This antibody is purified through a protein A column, followed by peptide affinity purification.
<b>Storage</b>	Maintain refrigerated at 2-8°C for up to 2 weeks. For long term storage store at -20°C in small aliquots to prevent freeze-thaw cycles.
<b>Precautions</b>	COPS2 Antibody (N-term) is for research use only and not for use in diagnostic or therapeutic procedures.

## Protein Information

---

<b>Name</b>	COPS2
-------------	-------

## Synonyms

CSN2, TRIP15

## Function

Essential component of the COP9 signalosome complex (CSN), a complex involved in various cellular and developmental processes. The CSN complex is an essential regulator of the ubiquitin (Ubl) conjugation pathway by mediating the deneddylation of the cullin subunits of SCF-type E3 ligase complexes, leading to decrease the Ubl ligase activity of SCF-type complexes such as SCF, CSA or DDB2. The complex is also involved in phosphorylation of p53/TP53, c-jun/JUN, IkappaBalpha/NFKBIA, ITPK1 and IRF8/ICSBP, possibly via its association with CK2 and PKD kinases. CSN-dependent phosphorylation of TP53 and JUN promotes and protects degradation by the Ubl system, respectively. Involved in early stage of neuronal differentiation via its interaction with NIF3L1.

## Cellular Location

Cytoplasm. Nucleus

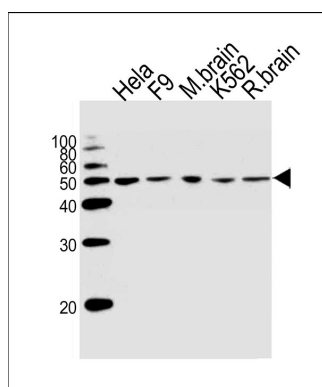
## Background

Essential component of the COP9 signalosome complex (CSN), a complex involved in various cellular and developmental processes. The CSN complex is an essential regulator of the ubiquitin (Ubl) conjugation pathway by mediating the deneddylation of the cullin subunits of SCF-type E3 ligase complexes, leading to decrease the Ubl ligase activity of SCF-type complexes such as SCF, CSA or DDB2. The complex is also involved in phosphorylation of p53/TP53, c-jun/JUN, IkappaBalpha/NFKBIA, ITPK1 and IRF8/ICSBP, possibly via its association with CK2 and PKD kinases. CSN-dependent phosphorylation of TP53 and JUN promotes and protects degradation by the Ubl system, respectively. Involved in early stage of neuronal differentiation via its interaction with NIF3L1.

## References

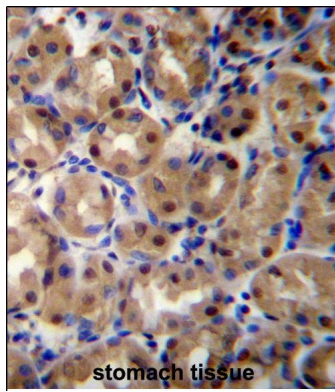
Kob, R., et al. Cell Cycle 8(13):2041-2049(2009)  
Leal, J.F., et al. Oncogene 27(14):1961-1970(2008)  
Fegers, I., et al. J. Proteome Res. 6(11):4182-4188(2007)  
Tenbaum, S.P., et al. Biochim. Biophys. Acta 1773(9):1447-1454(2007)  
Papaioannou, M., et al. Nucl Recept Signal 5, E008 (2007) :

## Images

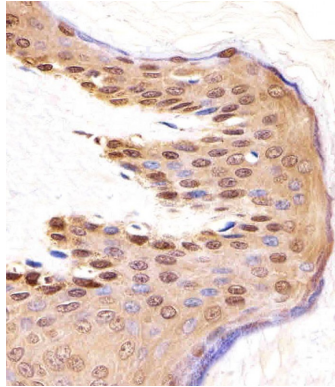


Western blot analysis of lysates from HeLa, mouse F9 cell line, mouse brain tissue lysate, K562 cell line, rat brain tissue lysate (from left to right), using COPS2 Antibody (N-term) (Cat. #AW5212). AW5212 was diluted at 1:1000 at each lane. A goat anti-rabbit IgG H&L(HRP) at 1:10000 dilution was used as the secondary antibody.

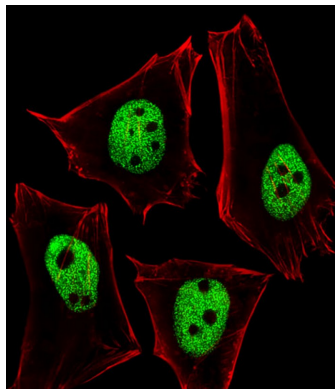
COPS2 Antibody (N-term) (Cat. #AW5212) immunohistochemistry analysis in formalin fixed and paraffin embedded human stomach tissue followed by peroxidase conjugation of the secondary antibody and DAB staining. This data demonstrates the use of COPS2 Antibody (N-term) for



immunohistochemistry. Clinical relevance has not been evaluated.



Immunohistochemical analysis of paraffin-embedded H. skin section using COPS2 Antibody (N-term)(Cat#AW5212). AW5212 was diluted at 1:25 dilution. A undiluted biotinylated goat polyvalent antibody was used as the secondary, followed by DAB staining.



Fluorescent image of HeLa cells stained with COPS2 Antibody (N-term)(Cat#AW5212). AW5212 was diluted at 1:25 dilution. An Alexa Fluor 488-conjugated goat anti-rabbit IgG at 1:400 dilution was used as the secondary antibody (green). Cytoplasmic actin was counterstained with Alexa Fluor® 555 conjugated with Phalloidin (red).

Please note: All products are 'FOR RESEARCH USE ONLY. NOT FOR USE IN DIAGNOSTIC OR THERAPEUTIC PROCEDURES'.