

ENOB Antibody (Center)

Purified Rabbit Polyclonal Antibody (Pab)

Catalog # AW5243

Product Information

Application	FC, IHC-P, WB
Primary Accession	P13929
Other Accession	P15429 , Q1KYT0 , P21550 , Q3ZC09
Reactivity	Mouse, Rat, Human
Predicted	Bovine
Host	Rabbit
Clonality	Polyclonal
Calculated MW	46987
Isotype	Rabbit IgG
Antigen Source	HUMAN

Additional Information

Gene ID	2027
Antigen Region	237-264
Other Names	ENO3; Beta-enolase; 2-phospho-D-glycerate hydro-lyase; Enolase 3; Muscle-specific enolase; Skeletal muscle enolase
Dilution	FC~~1:10~50 IHC-P~~1:100~500 WB~~1:1000
Target/Specificity	This ENOB antibody is generated from rabbits immunized with a KLH conjugated synthetic peptide between 237-264 amino acids from the Central region of human ENOB.
Format	Purified polyclonal antibody supplied in PBS with 0.09% (W/V) sodium azide. This antibody is prepared by Saturated Ammonium Sulfate (SAS) precipitation followed by dialysis against PBS.
Storage	Maintain refrigerated at 2-8°C for up to 2 weeks. For long term storage store at -20°C in small aliquots to prevent freeze-thaw cycles.
Precautions	ENOB Antibody (Center) is for research use only and not for use in diagnostic or therapeutic procedures.

Protein Information

Name	ENO3
Function	Glycolytic enzyme that catalyzes the conversion of 2- phosphoglycerate to

phosphoenolpyruvate. Appears to have a function in striated muscle development and regeneration.

Cellular Location

Cytoplasm. Note=Localized to the Z line. Some colocalization with CKM at M-band (By similarity).

Tissue Location

The alpha/alpha homodimer is expressed in embryo and in most adult tissues. The alpha/beta heterodimer and the beta/beta homodimer are found in striated muscle, and the alpha/gamma heterodimer and the gamma/gamma homodimer in neurons

Background

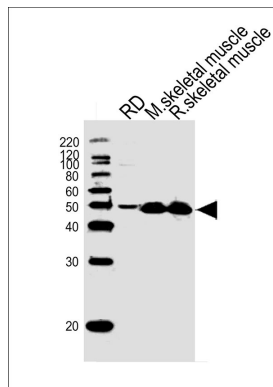
ENOB is one of the three enolase isoenzymes found in mammals. This isoenzyme, a homodimer, is found in skeletal muscle cells in the adult. A switch from alpha enolase to beta enolase occurs in muscle tissue during development in rodents. Mutations in its gene can be associated with metabolic myopathies that may result from decreased stability of the enzyme.

References

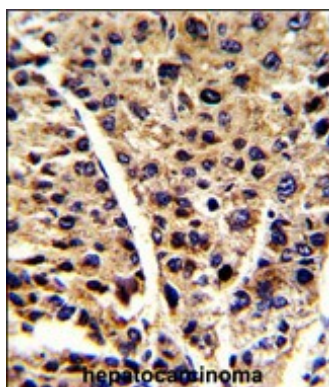
Aurino,S., Acta Myol 27, 90-97 (2008)

Giallongo,A., Eur. J. Biochem. 214 (2), 367-374 (1993)

Images

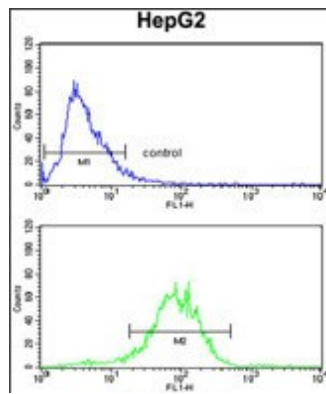


Western blot analysis of lysates from RD cell line, mouse skeletal muscle, rat skeletal muscle tissue lysate (from left to right), using ENOB Antibody (Center) (Cat. #AW5243). AW5243 was diluted at 1:1000 at each lane. A goat anti-rabbit IgG H&L (HRP) at 1:10000 dilution was used as the secondary antibody.



Formalin-fixed and paraffin-embedded human hepatocarcinoma reacted with ENOB Antibody (Center), which was peroxidase-conjugated to the secondary antibody, followed by DAB staining. This data demonstrates the use of this antibody for immunohistochemistry; clinical relevance has not been evaluated.

ENOB Antibody (Center) (Cat.#AW5243) flow cytometry analysis of HepG2 cells (bottom histogram) compared to a negative control cell (top histogram). FITC-conjugated goat-anti-rabbit secondary antibodies were used for the analysis.



Please note: All products are 'FOR RESEARCH USE ONLY. NOT FOR USE IN DIAGNOSTIC OR THERAPEUTIC PROCEDURES'.