

ITA6 Antibody

Affinity Purified Rabbit Polyclonal Antibody (Pab)

Catalog # AW5255

Product Information

Application	WB
Primary Accession	P23229
Reactivity	Mouse, Human
Host	Rabbit
Clonality	Polyclonal
Calculated MW	126606
Isotype	Rabbit IgG
Antigen Source	HUMAN

Additional Information

Gene ID	3655
Antigen Region	53-329
Other Names	ITGA6; Integrin alpha-6; CD49 antigen-like family member F; VLA-6; CD_antigen=CD49f; Integrin alpha-6 heavy chain; Integrin alpha-6 light chain
Dilution	WB~~ 1:1000
Target/Specificity	This ITA6 antibody is generated from rabbits immunized with ITA6 recombinant protein.
Format	Purified polyclonal antibody supplied in PBS with 0.09% (W/V) sodium azide. This antibody is purified through a protein A column, followed by peptide affinity purification.
Storage	Maintain refrigerated at 2-8°C for up to 2 weeks. For long term storage store at -20°C in small aliquots to prevent freeze-thaw cycles.
Precautions	ITA6 Antibody is for research use only and not for use in diagnostic or therapeutic procedures.

Protein Information

Name	ITGA6
Function	Integrin alpha-6/beta-1 (ITGA6:ITGB1) is a receptor for laminin on platelets (By similarity). Integrin alpha-6/beta-1 (ITGA6:ITGB1) is present in oocytes and is involved in sperm-egg fusion (By similarity). Integrin alpha-6/beta-4 (ITGA6:ITGB4) is a receptor for laminin in epithelial cells and it plays a critical

structural role in the hemidesmosome (By similarity). ITGA6:ITGB4 binds to NRG1 (via EGF domain) and this binding is essential for NRG1-ERBB signaling (PubMed:[20682778](#)). ITGA6:ITGB4 binds to IGF1 and this binding is essential for IGF1 signaling (PubMed:[22351760](#)). ITGA6:ITGB4 binds to IGF2 and this binding is essential for IGF2 signaling (PubMed:[28873464](#)).

Cellular Location

Cell membrane; Single-pass type I membrane protein. Cell membrane; Lipid-anchor

Tissue Location

Integrin alpha-6/beta-4 is predominantly expressed by epithelia. Isoforms containing segment X1 are ubiquitously expressed. Isoforms containing segment X1X2 are expressed in heart, kidney, placenta, colon, duodenum, myoblasts and myotubes, and in a limited number of cell lines; they are always coexpressed with the ubiquitous isoform containing segment X1. In some tissues (e.g Salivary gland), isoforms containing cytoplasmic segment A and isoforms containing segment B are detected while in others, only isoforms containing one cytoplasmic segment are found (segment A in epidermis and segment B in kidney). Processed integrin alpha-6: Expressed at low levels in normal prostate tissue with elevated levels in prostate cancer tissue (at protein level) (PubMed:15023541)

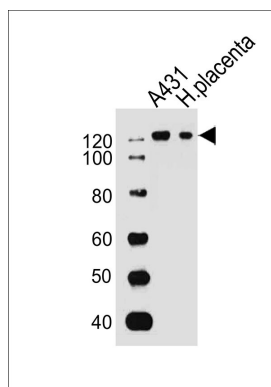
Background

The ITGA6 protein product is the integrin alpha chain alpha 6. Integrins are integral cell-surface proteins composed of an alpha chain and a beta chain. A given chain may combine with multiple partners resulting in different integrins. For example, alpha 6 may combine with beta 4 in the integrin referred to as TSP180, or with beta 1 in the integrin VLA-6. Integrins are known to participate in cell adhesion as well as cell-surface mediated signalling.

References

Kim, T.H., et al. Mol. Cancer Res. 7(10):1605-1612(2009)
Eeles, R.A., et al. Nat. Genet. 41(10):1116-1121(2009)
Boroujerdnia, M.G., et al. Pak. J. Biol. Sci. 12(4):360-366(2009)
Dai, J.Y., et al. BMC Cancer 9, 337 (2009)
Dydensborg, A.B., et al. BMC Cancer 9, 223 (2009)

Images



Western blot analysis of lysates from A431 cell line and human placenta tissue (from left to right), using ITA6 Antibody(Cat. #AW5255). AW5255 was diluted at 1:1000 at each lane. A goat anti-rabbit IgG H&L(HRP) at 1:10000 dilution was used as the secondary antibody.

Please note: All products are 'FOR RESEARCH USE ONLY. NOT FOR USE IN DIAGNOSTIC OR THERAPEUTIC PROCEDURES'.