

NR2F1 Antibody (N-term)

Affinity Purified Rabbit Polyclonal Antibody (Pab)

Catalog # AW5262

Product Information

Application	WB
Primary Accession	P10589
Other Accession	Q9TTR8 , NP_005645.1
Reactivity	Mouse, Rat, Human
Predicted	Bovine
Host	Rabbit
Clonality	Polyclonal
Calculated MW	46156
Isotype	Rabbit IgG
Antigen Source	HUMAN

Additional Information

Gene ID	7025
Antigen Region	48-76
Other Names	NR2F1; EAR3; ERBAL3; TFCOUP1; COUP transcription factor 1; COUP transcription factor I; Nuclear receptor subfamily 2 group F member 1; V-erbA-related protein 3
Dilution	WB~~ 1:1000
Target/Specificity	This NR2F1 antibody is generated from rabbits immunized with a KLH conjugated synthetic peptide between 48-76 amino acids from the N-terminal region of human NR2F1.
Format	Purified polyclonal antibody supplied in PBS with 0.09% (W/V) sodium azide. This antibody is purified through a protein A column, followed by peptide affinity purification.
Storage	Maintain refrigerated at 2-8°C for up to 2 weeks. For long term storage store at -20°C in small aliquots to prevent freeze-thaw cycles.
Precautions	NR2F1 Antibody (N-term) is for research use only and not for use in diagnostic or therapeutic procedures.

Protein Information

Name	NR2F1
-------------	-------

Synonyms	EAR3, ERBAL3, TFCOUP1
Function	Coup (chicken ovalbumin upstream promoter) transcription factor binds to the ovalbumin promoter and, in conjunction with another protein (S300-II) stimulates initiation of transcription. Binds to both direct repeats and palindromes of the 5'-AGGTCA-3' motif. Represses transcriptional activity of LHCG.
Cellular Location	Nucleus.

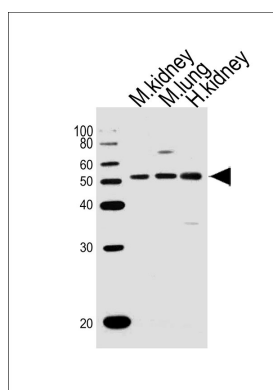
Background

Coup (chicken ovalbumin upstream promoter) transcription factor binds to the ovalbumin promoter and, in conjunction with another protein (S300-II) stimulates initiation of transcription. Binds to both direct repeats and palindromes of the 5'-AGGTCA-3' motif. Represses transcriptional activity of LHCG.

References

Davis, O.S., et al. Behav. Genet. (2010) In press :
Dai, K., et al. Arterioscler. Thromb. Vasc. Biol. 30(3):568-574(2010)
Montemayor, C., et al. PLoS ONE 5 (1), E8910 (2010) :
Bush, Z.M., et al. Pituitary 13(1):1-7(2010)
Johnson, M.P., et al. Hum. Genet. 126(5):655-666(2009)

Images



Western blot analysis of lysates from mouse kidney, mouse lung, human kidney tissue lysate (from left to right), using NR2F1 Antibody (N-term) (Cat. #AW5262). AW5262 was diluted at 1:1000 at each lane. A goat anti-rabbit IgG H&L (HRP) at 1:10000 dilution was used as the secondary antibody.

Please note: All products are 'FOR RESEARCH USE ONLY. NOT FOR USE IN DIAGNOSTIC OR THERAPEUTIC PROCEDURES'.