

MAGED1 Antibody (Center)[Knockdown Validated]

Purified Mouse Monoclonal Antibody (Mab)

Catalog # AW5278

Product Information

Application	WB
Primary Accession	Q9Y5V3
Reactivity	Human
Host	Mouse
Clonality	Monoclonal
Calculated MW	86 KDa
Isotype	IgG1, κ
Antigen Source	HUMAN

Additional Information

Antigen Region	20-224
Other Names	Melanoma-associated antigen D1, MAGE tumor antigen CCF, MAGE-D1 antigen, Neurotrophin receptor-interacting MAGE homolog, MAGED1, NRAGE
Dilution	WB~~1:2000
Target/Specificity	This MAGED1 antibody is generated from a mouse immunized with a KLH conjugated synthetic peptide between 20-224 amino acids from the Central region of human MAGED1.
Format	Purified monoclonal antibody supplied in PBS with 0.09% (W/V) sodium azide. This antibody is purified through a protein G column, followed by dialysis against PBS.
Storage	Maintain refrigerated at 2-8°C for up to 2 weeks. For long term storage store at -20°C in small aliquots to prevent freeze-thaw cycles.
Precautions	MAGED1 Antibody (Center)[Knockdown Validated] is for research use only and not for use in diagnostic or therapeutic procedures.

Protein Information

Background

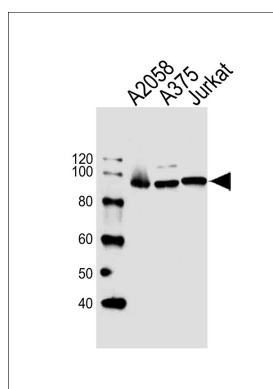
Involved in the apoptotic response after nerve growth factor (NGF) binding in neuronal cells. Binds NGFR/p75NTR and antagonizes its association with NTRK1/TrkA, inhibits cell cycle progression, and facilitates NGFR-mediated apoptosis. May act as a regulator of the function of DLX family members. May regulate TP53/p53 transcriptional activity and inhibit cell proliferation. Enhances TP53 phosphorylation and

accumulation. May enhance ubiquitin ligase activity of RING-type zinc finger-containing E3 ubiquitin-protein ligases. Proposed to act through recruitment and/or stabilization of the Ubl-conjugating enzyme (E2) at the E3:substrate complex.

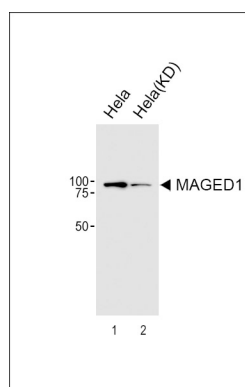
References

Salehi A.H.,et al.Neuron 27:279-288(2000).
Wen C.-J.,et al.FEBS Lett. 564:171-176(2004).
Chen Y.,et al.Submitted (AUG-2000) to the EMBL/GenBank/DDBJ databases.
Ross M.T.,et al.Nature 434:325-337(2005).
Pold M.,et al.Genomics 59:161-167(1999).

Images



Western blot analysis of lysates from A2058,A375,Jurkat cell line (from left to right), using MAGED1 Antibody (Center)(Cat. #AW5278). AW5278 was diluted at 1:1000 at each lane. A goat anti-mouse IgG H&L(HRP) at 1:10000 dilution was used as the secondary antibody.



All lanes : Anti-MAGED1 Antibody (Center) at 1:2000 dilution Lane 1: HeLa Lane 2: HeLa-Knockdown Lysates/proteins at 20 µg per lane. Secondary Goat Anti-Mouse IgG, (H+L), Peroxidase conjugated (ASP1613) at 1/8000 dilution.

Please note: All products are 'FOR RESEARCH USE ONLY. NOT FOR USE IN DIAGNOSTIC OR THERAPEUTIC PROCEDURES'.