

ESR2 Antibody(C-term)

Affinity Purified Rabbit Polyclonal Antibody (Pab)
Catalog # AW5284

Product Information

Application	WB
Primary Accession	Q92731
Other Accession	Q9XSB5 , NP_001035365.1
Reactivity	Mouse, Rat, Human
Predicted	Bovine
Host	Rabbit
Clonality	Polyclonal
Calculated MW	55 KDa
Isotype	Rabbit IgG
Antigen Source	HUMAN

Additional Information

Antigen Region	451-480
Other Names	ESR2; ESTRB; NR3A2; Estrogen receptor beta; Nuclear receptor subfamily 3 group A member 2
Dilution	WB~~1:1000
Target/Specificity	This ESR2 antibody is generated from rabbits immunized with a KLH conjugated synthetic peptide between 451-480 amino acids from the C-terminal region of human ESR2.
Format	Purified polyclonal antibody supplied in PBS with 0.09% (W/V) sodium azide. This antibody is purified through a protein A column, followed by peptide affinity purification.
Storage	Maintain refrigerated at 2-8°C for up to 2 weeks. For long term storage store at -20°C in small aliquots to prevent freeze-thaw cycles.
Precautions	ESR2 Antibody(C-term) is for research use only and not for use in diagnostic or therapeutic procedures.

Protein Information

Background

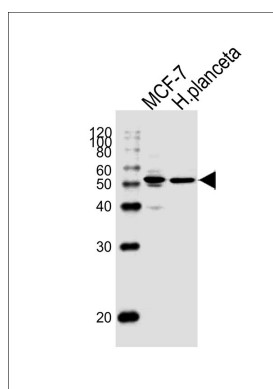
This gene encodes a member of the family of estrogen receptors and superfamily of nuclear receptor transcription factors. The gene product contains an N-terminal DNA binding domain and C-terminal ligand

binding domain and is localized to the nucleus, cytoplasm, and mitochondria. Upon binding to 17beta-estradiol or related ligands, the encoded protein forms homo- or hetero-dimers that interact with specific DNA sequences to activate transcription. Some isoforms dominantly inhibit the activity of other estrogen receptor family members. Several alternatively spliced transcript variants of this gene have been described, but the full-length nature of some of these variants has not been fully characterized.

References

Fang, Y.J., et al. *Tumour Biol.* 31(6):651-658(2010) Hayes, D.F., et al. *Clin. Pharmacol. Ther.* 88(5):626-629(2010) Romero, R., et al. *Am. J. Obstet. Gynecol.* 203 (4), 361 (2010) : Wurster, M., et al. *Oncol. Rep.* 24(3):653-659(2010) Paulus, J.K., et al. *Lung Cancer* (2010) In press :

Images



Western blot analysis of lysates from MCF-7 cell line and human placenta tissue (from left to right), using ESR2 Antibody (C-term)(Cat. #AW5284). AW5284 was diluted at 1:1000 at each lane. A goat anti-rabbit IgG H&L(HRP) at 1:10000 dilution was used as the secondary antibody.

Please note: All products are 'FOR RESEARCH USE ONLY. NOT FOR USE IN DIAGNOSTIC OR THERAPEUTIC PROCEDURES'.