

C16orf71 Antibody (Center)

Affinity Purified Rabbit Polyclonal Antibody (Pab)

Catalog # AW5285

Product Information

Application	WB
Primary Accession	Q8IYS4
Reactivity	Human
Host	Rabbit
Clonality	Polyclonal
Calculated MW	55682
Isotype	Rabbit IgG
Antigen Source	Human

Additional Information

Gene ID	146562
Antigen Region	320-348
Other Names	Uncharacterized protein C16orf71;Uncharacterized protein C16orf71
Dilution	WB~~1:1000
Target/Specificity	This C16orf71 antibody is generated from rabbits immunized with a KLH conjugated synthetic peptide between 320-348 amino acids from the Central region of human C16orf71.
Format	Purified polyclonal antibody supplied in PBS with 0.09% (W/V) sodium azide. This antibody is purified through a protein A column, followed by peptide affinity purification.
Storage	Maintain refrigerated at 2-8°C for up to 2 weeks. For long term storage store at -20°C in small aliquots to prevent freeze-thaw cycles.
Precautions	C16orf71 Antibody (Center) is for research use only and not for use in diagnostic or therapeutic procedures.

Protein Information

Name	DNAAF8 (HGNC:25081)
Function	In ciliated cells, dynein axonemal particle-specific protein required for deployment of ODA to the axoneme. Interacts with outer dynein arm (ODA) subunits.

Cellular Location	Dynein axonemal particle. Cytoplasm
Tissue Location	Expressed in respiratory ciliated cells (at protein level).

Background

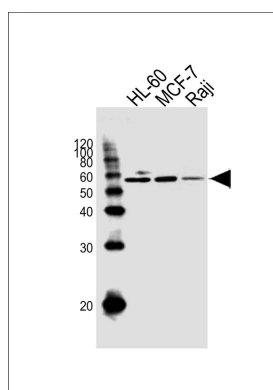
The exact function of C16orf71 remains unknown.

References

Martin J., et al. Nature 432:988-994(2004).

Guo J.H., et al. Submitted (OCT-2001) to the EMBL/GenBank/DDBJ databases.

Images



Western blot analysis of lysates from HL-60, MCF-7, Raji cell line (from left to right), using C16orf71 Antibody (Center)(Cat. #AW5285). AW5285 was diluted at 1:1000 at each lane. A goat anti-rabbit IgG H&L(HRP) at 1:10000 dilution was used as the secondary antibody.

Please note: All products are 'FOR RESEARCH USE ONLY. NOT FOR USE IN DIAGNOSTIC OR THERAPEUTIC PROCEDURES'.