

ESR2 Antibody (Center)

Purified Rabbit Polyclonal Antibody (Pab)

Catalog # AW5289

Product Information

Application	FC, WB
Primary Accession	Q92731
Other Accession	Q62986 , Q9XSW2 , Q9PTU5 , Q9XSB5
Reactivity	Human
Predicted	Rat, Bovine, Chicken
Host	Rabbit
Clonality	Polyclonal
Calculated MW	59216
Isotype	Rabbit IgG
Antigen Source	HUMAN

Additional Information

Gene ID	2100
Antigen Region	369-397
Other Names	ESR2; ESTRB; NR3A2; Estrogen receptor beta; Nuclear receptor subfamily 3 group A member 2
Dilution	FC~~1:10~50 WB~~1:1000
Target/Specificity	This ESR2 antibody is generated from rabbits immunized with a KLH conjugated synthetic peptide between 369-397 amino acids from the Central region of human ESR2.
Format	Purified polyclonal antibody supplied in PBS with 0.09% (W/V) sodium azide. This antibody is prepared by Saturated Ammonium Sulfate (SAS) precipitation followed by dialysis against PBS.
Storage	Maintain refrigerated at 2-8°C for up to 2 weeks. For long term storage store at -20°C in small aliquots to prevent freeze-thaw cycles.
Precautions	ESR2 Antibody (Center) is for research use only and not for use in diagnostic or therapeutic procedures.

Protein Information

Name	ESR2
Synonyms	ESTRB, NR3A2

Function	Nuclear hormone receptor. Binds estrogens with an affinity similar to that of ESR1/ER-alpha, and activates expression of reporter genes containing estrogen response elements (ERE) in an estrogen- dependent manner (PubMed: 20074560).
Cellular Location	Nucleus {ECO:0000255 PROSITE-ProRule:PRU00407, ECO:0000269 PubMed:19126643, ECO:0000269 PubMed:20074560}
Tissue Location	[Isoform 1]: Expressed in testis and ovary, and at a lower level in heart, brain, placenta, liver, skeletal muscle, spleen, thymus, prostate, colon, bone marrow, mammary gland and uterus Also found in uterine bone, breast, and ovarian tumor cell lines, but not in colon and liver tumors. [Isoform 4]: Expressed in the testis. [Isoform 6]: Expressed in testis, placenta, skeletal muscle, spleen and leukocytes, and at a lower level in heart, lung, liver, kidney, pancreas, thymus, prostate, colon, small intestine, bone marrow, mammary gland and uterus. Not expressed in brain.

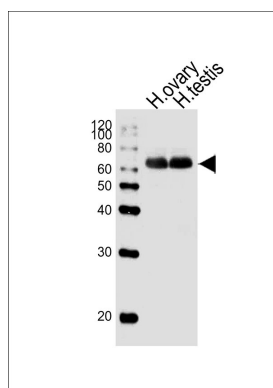
Background

ESR2 is a nuclear hormone receptor. The protein binds estrogens with an affinity similar to that of ESR1, and activates expression of reporter genes containing estrogen response elements (ERE) in an estrogen-dependent manner.

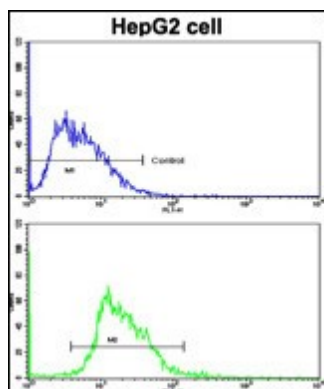
References

Chen H., Lin R.J.Cell 90:569-580(1997)
Caira F., Antonson P.J. Biol. Chem. 275:5308-5317(2000)
Bu H., Kashireddy P.Biochem. Biophys. Res. Commun. 317:54-59(2004)

Images



Western blot analysis of lysates from human ovary, human testis tissue lysate (from left to right), using ESR2 Antibody (Center) (Cat. #AW5289). AW5289 was diluted at 1:1000 at each lane. A goat anti-rabbit IgG H&L (HRP) at 1:10000 dilution was used as the secondary antibody.



Flow cytometric analysis of HepG2 cells using ESR2 Antibody (Center) (bottom histogram) compared to a negative control cell (top histogram). FITC-conjugated goat-anti-rabbit secondary antibodies were used for the analysis.

Please note: All products are 'FOR RESEARCH USE ONLY. NOT FOR USE IN DIAGNOSTIC OR THERAPEUTIC PROCEDURES'.