

DECR1 Antibody (Center)

Purified Rabbit Polyclonal Antibody (Pab)

Catalog # AW5307

Product Information

Application	WB
Primary Accession	Q16698
Reactivity	Human, Mouse, Rat
Host	Rabbit
Clonality	Polyclonal
Calculated MW	36068
Isotype	Rabbit IgG
Antigen Source	HUMAN

Additional Information

Gene ID	1666
Antigen Region	241-274
Other Names	4-dienoyl-CoA reductase, mitochondrial, 4-dienoyl-CoA reductase [NADPH], 4-enoyl-CoA reductase [NADPH], DECR1, DECR
Dilution	WB~~1:1000
Target/Specificity	This DECR1 antibody is generated from a rabbit immunized with a KLH conjugated synthetic peptide between 241-274 amino acids from the Central region of human DECR1.
Format	Purified polyclonal antibody supplied in PBS with 0.09% (W/V) sodium azide. This antibody is purified through a protein A column, followed by peptide affinity purification.
Storage	Maintain refrigerated at 2-8°C for up to 2 weeks. For long term storage store at -20°C in small aliquots to prevent freeze-thaw cycles.
Precautions	DECR1 Antibody (Center) is for research use only and not for use in diagnostic or therapeutic procedures.

Protein Information

Name	DECR1
Synonyms	DECR, SDR18C1
Function	Auxiliary enzyme of beta-oxidation. It participates in the metabolism of

unsaturated fatty enoyl-CoA esters having double bonds in both even- and odd-numbered positions in mitochondria. Catalyzes the NADP-dependent reduction of 2,4-dienoyl-CoA to yield trans-3-enoyl-CoA.

Cellular Location

Mitochondrion.

Tissue Location

Heart = liver = pancreas > kidney >> skeletal muscle = lung.

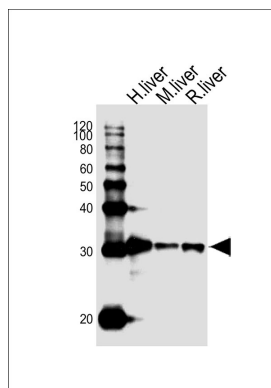
Background

Auxiliary enzyme of beta-oxidation. It participates in the metabolism of unsaturated fatty enoyl-CoA esters having double bonds in both even- and odd-numbered positions. Catalyzes the NADP-dependent reduction of 2,4-dienoyl-CoA to yield trans-3-enoyl-CoA.

References

Koivuranta K.T.,et al.Biochem. J. 304:787-792(1994).
Ding J.H.,et al.Submitted (OCT-1996) to the EMBL/GenBank/DDBJ databases.
Helander H.M.,et al.Genomics 46:112-119(1997).
Nusbaum C.,et al.Nature 439:331-335(2006).
Choudhary C.,et al.Science 325:834-840(2009).

Images



Western blot analysis of lysates from human liver, mouse liver and rat liver tissue lysate (from left to right), using DECR1 Antibody (Center)(Cat. #AW5307). AW5307 was diluted at 1:1000 at each lane. A goat anti-rabbit IgG H&L(HRP) at 1:10000 dilution was used as the secondary antibody.

Please note: All products are 'FOR RESEARCH USE ONLY. NOT FOR USE IN DIAGNOSTIC OR THERAPEUTIC PROCEDURES'.