

# ASH2L Antibody (Center)

Purified Rabbit Polyclonal Antibody (Pab)

Catalog # AW5312

## Product Information

---

Application	WB
Primary Accession	<a href="#">Q9UBL3</a>
Other Accession	<a href="#">Q91X20</a>
Reactivity	Human, Mouse
Host	Rabbit
Clonality	Polyclonal
Calculated MW	68723
Isotype	Rabbit IgG
Antigen Source	HUMAN

## Additional Information

---

Gene ID	9070
Antigen Region	237-270
Other Names	Set1/Ash2 histone methyltransferase complex subunit ASH2, ASH2-like protein, ASH2L, ASH2L1
Dilution	WB~~1:1000
Target/Specificity	This ASH2L antibody is generated from a rabbit immunized with a KLH conjugated synthetic peptide between 237-270 amino acids from the Central region of human ASH2L.
Format	Purified polyclonal antibody supplied in PBS with 0.09% (W/V) sodium azide. This antibody is purified through a protein A column, followed by peptide affinity purification.
Storage	Maintain refrigerated at 2-8°C for up to 2 weeks. For long term storage store at -20°C in small aliquots to prevent freeze-thaw cycles.
Precautions	ASH2L Antibody (Center) is for research use only and not for use in diagnostic or therapeutic procedures.

## Protein Information

---

Name	ASH2L
Synonyms	ASH2L1

<b>Function</b>	Transcriptional regulator (PubMed: <a href="#">12670868</a> ). Component or associated component of some histone methyltransferase complexes which regulates transcription through recruitment of those complexes to gene promoters (PubMed: <a href="#">19131338</a> ). Component of the Set1/Ash2 histone methyltransferase (HMT) complex, a complex that specifically methylates 'Lys-4' of histone H3, but not if the neighboring 'Lys-9' residue is already methylated (PubMed: <a href="#">19556245</a> ). As part of the MLL1/MLL complex it is involved in methylation and dimethylation at 'Lys-4' of histone H3 (PubMed: <a href="#">19556245</a> ). May play a role in hematopoiesis (PubMed: <a href="#">12670868</a> ). In association with RBBP5 and WDR5, stimulates the histone methyltransferase activities of KMT2A, KMT2B, KMT2C, KMT2D, SETD1A and SETD1B (PubMed: <a href="#">21220120</a> , PubMed: <a href="#">22266653</a> ).
<b>Cellular Location</b>	Nucleus.
<b>Tissue Location</b>	Ubiquitously expressed. Predominantly expressed in adult heart and testis and fetal lung and liver, with barely detectable expression in adult lung, liver, kidney, prostate, and peripheral leukocytes.

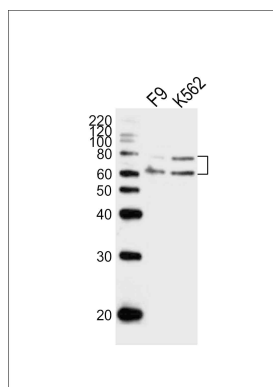
## Background

Component of the Set1/Ash2 histone methyltransferase (HMT) complex, a complex that specifically methylates 'Lys-4' of histone H3, but not if the neighboring 'Lys-9' residue is already methylated. As part of the MLL1/MLL complex it is involved in methylation and dimethylation at 'Lys-4' of histone H3. May function as a transcriptional regulator. May play a role in hematopoiesis.

## References

Wang J.,et al.J. Mol. Med. 79:399-405(2001).  
Ikegawa S.,et al.Cytogenet. Cell Genet. 84:167-172(1999).  
Ota T.,et al.Nat. Genet. 36:40-45(2004).  
Mural R.J.,et al.Submitted (SEP-2005) to the EMBL/GenBank/DDBJ databases.  
Wysocka J.,et al.Genes Dev. 17:896-911(2003).

## Images



Western blot analysis of lysates from mouse F9,K562 cell line (from left to right), using ASH2L Antibody (Center)(Cat. #AW5312). AW5312 was diluted at 1:1000 at each lane. A goat anti-rabbit IgG H&L(HRP) at 1:10000 dilution was used as the secondary antibody.Lysates at 20ug per lane.

Please note: All products are 'FOR RESEARCH USE ONLY. NOT FOR USE IN DIAGNOSTIC OR THERAPEUTIC PROCEDURES'.