

CARD6 Antibody (Center)

Affinity Purified Rabbit Polyclonal Antibody (Pab)

Catalog # AW5322

Product Information

Application	IHC-P, WB
Primary Accession	Q9BX69
Reactivity	Human
Host	Rabbit
Clonality	Polyclonal
Calculated MW	116468
Isotype	Rabbit IgG
Antigen Source	HUMAN

Additional Information

Gene ID	84674
Other Names	Caspase recruitment domain-containing protein 6; CARD6
Dilution	IHC-P~~1:100~500 WB~~1:1000
Target/Specificity	This CARD6 antibody is generated from rabbits immunized with a KLH conjugated synthetic peptide selected from the Center region of human CARD6.
Format	Purified polyclonal antibody supplied in PBS with 0.09% (W/V) sodium azide. This antibody is purified through a protein A column, followed by peptide affinity purification.
Storage	Maintain refrigerated at 2-8°C for up to 2 weeks. For long term storage store at -20°C in small aliquots to prevent freeze-thaw cycles.
Precautions	CARD6 Antibody (Center) is for research use only and not for use in diagnostic or therapeutic procedures.

Protein Information

Name	CARD6
Function	May be involved in apoptosis.

Background

CARD6 is a protein that contains a caspase recruitment domain (CARD), an antiparallel six-helical bundle

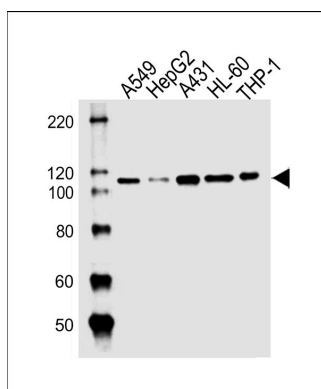
that mediates homotypic protein-protein interactions. The encoded protein is a microtubule-associated protein that has been shown to interact with receptor-interacting protein kinases and positively modulate signal transduction pathways converging on activation of the inducible transcription factor NF- κ B.

References

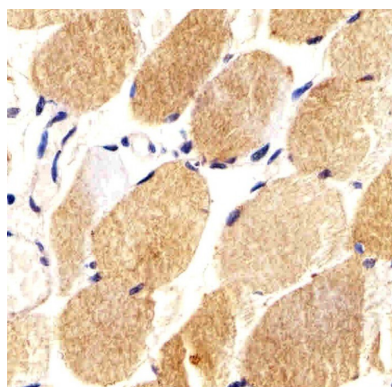
Kim,S.S., et.al., Pathology 42 (1), 50-53 (2010)

Olsen,J.V., et.al., Cell 127 (3), 635-648 (2006)

Images



Western blot analysis of lysates from A549,HepG2,A431,HL-60,THP-1 cell line (from left to right), using CARD6 Antibody (Center)(Cat. #AW5322). AW5322 was diluted at 1:1000 at each lane. A goat anti-rabbit IgG H&L(HRP) at 1:10000 dilution was used as the secondary antibody.Lysates at 20ug per lane.



Immunohistochemical analysis of paraffin-embedded H. skeletal muscle section using CARD6 Antibody (Center)(Cat#AW5322). AW5322 was diluted at 1:25 dilution. A undiluted biotinylated goat polyvalent antibody was used as the secondary, followed by DAB staining.

Please note: All products are 'FOR RESEARCH USE ONLY. NOT FOR USE IN DIAGNOSTIC OR THERAPEUTIC PROCEDURES'.