

SERPINA1(Short peptide from AAT) Antibody (C-term)

Purified Rabbit Polyclonal Antibody (Pab)

Catalog # AW5330

Product Information

Application	WB
Primary Accession	P01009
Reactivity	Human
Host	Rabbit
Clonality	polyclonal
Calculated MW	46737
Isotype	Rabbit IgG
Antigen Source	HUMAN

Additional Information

Gene ID	5265
Antigen Region	390-418
Other Names	Alpha-1-antitrypsin, Alpha-1 protease inhibitor, Alpha-1-antiproteinase, Serpin A1, Short peptide from AAT, SPAAT, SERPINA1, AAT, PI
Dilution	WB~~1:1000
Target/Specificity	This SERPINA1(Short peptide from AAT) antibody is generated from a rabbit immunized with a KLH conjugated synthetic peptide between 390-418 amino acids from the C-terminal region of human SERPINA1(Short peptide from AAT).
Format	Purified polyclonal antibody supplied in PBS with 0.09% (W/V) sodium azide. This antibody is purified through a protein A column, followed by peptide affinity purification.
Storage	Maintain refrigerated at 2-8°C for up to 2 weeks. For long term storage store at -20°C in small aliquots to prevent freeze-thaw cycles.
Precautions	SERPINA1(Short peptide from AAT) Antibody (C-term) is for research use only and not for use in diagnostic or therapeutic procedures.

Protein Information

Name	SERPINA1 (HGNC:8941)
Synonyms	AAT, PI

Function	Inhibitor of serine proteases. Its primary target is elastase, but it also has a moderate affinity for plasmin and thrombin. Irreversibly inhibits trypsin, chymotrypsin and plasminogen activator. The aberrant form inhibits insulin-induced NO synthesis in platelets, decreases coagulation time and has proteolytic activity against insulin and plasmin.
Cellular Location	Secreted. Endoplasmic reticulum. Note=The S and Z allele are not secreted effectively and accumulate intracellularly in the endoplasmic reticulum
Tissue Location	Ubiquitous. Expressed in leukocytes and plasma.

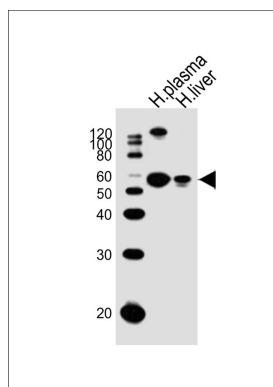
Background

Inhibitor of serine proteases. Its primary target is elastase, but it also has a moderate affinity for plasmin and thrombin. Irreversibly inhibits trypsin, chymotrypsin and plasminogen activator. The aberrant form inhibits insulin-induced NO synthesis in platelets, decreases coagulation time and has proteolytic activity against insulin and plasmin.

References

Bollen A.,et al.DNA 2:255-264(1983).
Long G.L.,et al.Biochemistry 23:4828-4837(1984).
Rosenberg S.,et al.Nature 312:77-80(1984).
Ciliberto G.,et al.Cell 41:531-540(1985).
Nukiwa T.,et al.J. Biol. Chem. 261:15989-15994(1986).

Images



Western blot analysis of lysates from human plasma, human liver tissue lysate (from left to right), using SERPINA1 (Short peptide from AAT) Antibody (C-term) (Cat. #AW5330). AW5330 was diluted at 1:1000 at each lane. A goat anti-rabbit IgG H&L (HRP) at 1:10000 dilution was used as the secondary antibody. Lysates at 20 µg per lane.

Please note: All products are 'FOR RESEARCH USE ONLY. NOT FOR USE IN DIAGNOSTIC OR THERAPEUTIC PROCEDURES'.