

Mouse Ror2 Antibody (C-term)

Purified Rabbit Polyclonal Antibody (Pab)

Catalog # AW5338

Product Information

Application	IHC-P, WB
Primary Accession	Q9Z138
Other Accession	Q01974
Reactivity	Human
Host	Rabbit
Clonality	Polyclonal
Calculated MW	105005
Isotype	Rabbit IgG
Antigen Source	HUMAN

Additional Information

Antigen Region	756-790
Other Names	Tyrosine-protein kinase transmembrane receptor ROR2, mROR2, Neurotrophic tyrosine kinase, receptor-related 2, Ror2
Dilution	IHC-P~~1:100~500 WB~~1:1000
Target/Specificity	This Mouse Ror2 antibody is generated from a rabbit immunized with a KLH conjugated synthetic peptide between 756-790 amino acids from the C-terminal region of human Mouse Ror2.
Format	Purified polyclonal antibody supplied in PBS with 0.09% (W/V) sodium azide. This antibody is purified through a protein A column, followed by peptide affinity purification.
Storage	Maintain refrigerated at 2-8°C for up to 2 weeks. For long term storage store at -20°C in small aliquots to prevent freeze-thaw cycles.
Precautions	Mouse Ror2 Antibody (C-term) is for research use only and not for use in diagnostic or therapeutic procedures.

Protein Information

Name	Ror2
Function	Tyrosine-protein kinase receptor which may be involved in the early formation of the chondrocytes. It seems to be required for cartilage and growth plate development (PubMed: 10700181). Phosphorylates YWHAB, leading to induction of osteogenesis and bone formation. In contrast, has also

been shown to have very little tyrosine kinase activity in vitro. May act as a receptor for wnt ligand WNT5A which may result in the inhibition of WNT3A-mediated signaling (By similarity).

Cellular Location

Cell membrane; Single-pass type I membrane protein

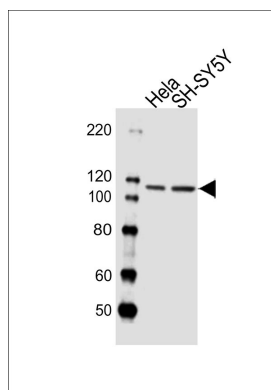
Background

Tyrosine-protein kinase receptor which may be involved in the early formation of the chondrocytes. It seems to be required for cartilage and growth plate development. Phosphorylates YWHAB, leading to induction of osteogenesis and bone formation (By similarity).

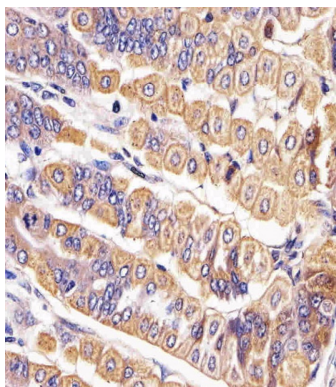
References

Oishi I.,et al.Genes Cells 4:41-56(1999).
Church D.M.,et al.PLoS Biol. 7:E1000112-E1000112(2009).
DeChiara T.M.,et al.Nat. Genet. 24:271-274(2000).
van Wijk N.V.,et al.Biochem. Biophys. Res. Commun. 390:211-216(2009).

Images



Western blot analysis of lysates from HeLa,SH-SY5Y cell line (from left to right), using Ror2 Antibody (C-term)(Cat. #AW5338). AW5338 was diluted at 1:1000 at each lane. A goat anti-rabbit IgG H&L(HRP) at 1:10000 dilution was used as the secondary antibody.Lysates at 20ug per lane.



Immunohistochemical analysis of paraffin-embedded M. stomach section using Mouse Ror2 Antibody (C-term)(Cat#AW5338). AW5338 was diluted at 1:25 dilution. A undiluted biotinylated goat polyvalent antibody was used as the secondary, followed by DAB staining.

Please note: All products are 'FOR RESEARCH USE ONLY. NOT FOR USE IN DIAGNOSTIC OR THERAPEUTIC PROCEDURES'.