

RPS21 Antibody (C-term)

Affinity Purified Rabbit Polyclonal Antibody (Pab)

Catalog # AW5345

Product Information

Application	WB
Primary Accession	P63220
Other Accession	P05765 , P63221 , Q9CQR2 , Q32PB8
Reactivity	Rat, Human
Predicted	Mouse, Rat, Bovine
Host	Rabbit
Clonality	Polyclonal
Calculated MW	9111
Isotype	Rabbit IgG
Antigen Source	HUMAN

Additional Information

Gene ID	6227
Antigen Region	44-71
Other Names	RPS21;40S ribosomal protein S21
Dilution	WB~~1:1010
Target/Specificity	This RPS21 antibody is generated from rabbits immunized with a KLH conjugated synthetic peptide between 44-71 amino acids from the C-terminal region of human RPS21.
Format	Purified polyclonal antibody supplied in PBS with 0.09% (W/V) sodium azide. This antibody is purified through a protein A column, followed by peptide affinity purification.
Storage	Maintain refrigerated at 2-8°C for up to 2 weeks. For long term storage store at -20°C in small aliquots to prevent freeze-thaw cycles.
Precautions	RPS21 Antibody (C-term) is for research use only and not for use in diagnostic or therapeutic procedures.

Protein Information

Name	RPS21
Function	Component of the small ribosomal subunit (PubMed: 23636399 , PubMed: 25901680 , PubMed: 25957688). The ribosome is a large

ribonucleoprotein complex responsible for the synthesis of proteins in the cell (PubMed:[23636399](#), PubMed:[25901680](#), PubMed:[25957688](#)).

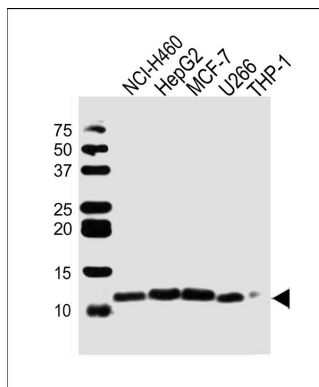
Cellular Location

Cytoplasm, cytosol. Cytoplasm Rough endoplasmic reticulum {ECO:0000250|UniProtKB:P63221} Note=Detected on cytosolic polysomes (PubMed:25957688). Detected in ribosomes that are associated with the rough endoplasmic reticulum (By similarity). {ECO:0000250|UniProtKB:P63221, ECO:0000269|PubMed:25957688}

References

Bhat K.S., et al. Nucleic Acids Res. 21:2939-2939(1993).
Smirnova E.V., et al. Bioorg. Khim. 26:392-396(2000).
Yoshihama M., et al. Genome Res. 12:379-390(2002).
Deloukas P., et al. Nature 414:865-871(2001).
Kenmochi N., et al. Genome Res. 8:509-523(1998).

Images



Western blot analysis of lysates from NCI-H460, HepG2, MCF-7, U266, THP-1 cell line (from left to right), using RPS21 Antibody (C-term)(Cat. #AW5345). AW5345 was diluted at 1:1000 at each lane. A goat anti-rabbit IgG H&L(HRP) at 1:10000 dilution was used as the secondary antibody. Lysates at 20ug per lane.

Please note: All products are 'FOR RESEARCH USE ONLY. NOT FOR USE IN DIAGNOSTIC OR THERAPEUTIC PROCEDURES'.