

# NCAM1 Antibody (C-term)

Purified Rabbit Polyclonal Antibody (Pab)

Catalog # AW5350

## Product Information

---

Application	FC, WB
Primary Accession	<a href="#">P13591</a>
Reactivity	Human
Host	Rabbit
Clonality	Polyclonal
Calculated MW	94574
Isotype	Rabbit IgG
Antigen Source	HUMAN

## Additional Information

---

Gene ID	4684
Antigen Region	829-863
Other Names	Neural cell adhesion molecule 1, N-CAM-1, NCAM-1, CD56, NCAM1, NCAM
Dilution	FC~~1:25 WB~~1:1000
Target/Specificity	This NCAM1 antibody is generated from a rabbit immunized with a KLH conjugated synthetic peptide between 829-863 amino acids from the C-terminal region of human NCAM1.
Format	Purified polyclonal antibody supplied in PBS with 0.09% (W/V) sodium azide. This antibody is purified through a protein A column, followed by peptide affinity purification.
Storage	Maintain refrigerated at 2-8°C for up to 2 weeks. For long term storage store at -20°C in small aliquots to prevent freeze-thaw cycles.
Precautions	NCAM1 Antibody (C-term) is for research use only and not for use in diagnostic or therapeutic procedures.

## Protein Information

---

Name	NCAM1 ( <a href="#">HGNC:7656</a> )
Synonyms	NCAM
Function	This protein is a cell adhesion molecule involved in neuron- neuron adhesion, neurite fasciculation, outgrowth of neurites, etc. (Microbial

infection) Acts as a receptor for Zika virus.

## Cellular Location

[Isoform 1]: Cell membrane; Single-pass type I membrane protein [Isoform 3]: Cell membrane; Lipid-anchor, GPI- anchor [Isoform 5]: Secreted.

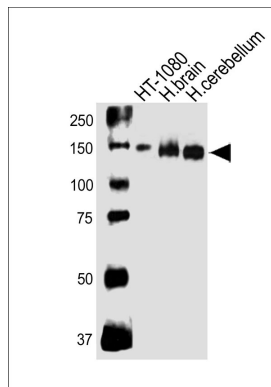
## Background

This protein is a cell adhesion molecule involved in neuron-neuron adhesion, neurite fasciculation, outgrowth of neurites, etc.

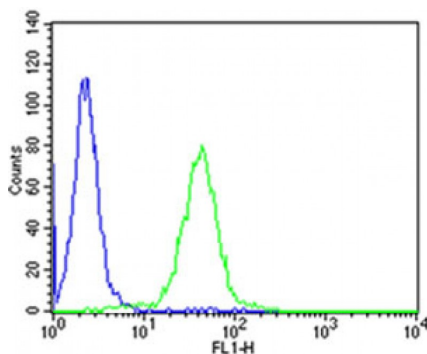
## References

Barton C.H.,et al.Development 104:165-173(1988).  
Lanier L.L.,et al.J. Immunol. 146:4421-4426(1991).  
Saito S.,et al.Lung Cancer 10:307-318(1994).  
Ota T.,et al.Nat. Genet. 36:40-45(2004).  
Totoki Y.,et al.Submitted (MAR-2005) to the EMBL/GenBank/DDBJ databases.

## Images



Western blot analysis of lysates from HT-1080 cell line, human brain, human cerebellum tissue lysate (from left to right), using NCAM1 Antibody (C-term) (Cat. #AW5350). AW5350 was diluted at 1:1000 at each lane. A goat anti-rabbit IgG H&L (HRP) at 1:10000 dilution was used as the secondary antibody. Lysates at 20 µg per lane.



Flow cytometric analysis of SH-SY5Y cells using NCAM1 Antibody (C-term) (green, Cat#AW5350) compared to an isotype control of rabbit IgG (blue). AW5350 was diluted at 1:25 dilution. An Alexa Fluor® 488 goat anti-rabbit IgG at 1:400 dilution was used as the secondary antibody.

Please note: All products are 'FOR RESEARCH USE ONLY. NOT FOR USE IN DIAGNOSTIC OR THERAPEUTIC PROCEDURES'.