

CHCHD3 Antibody (Center)

Purified Rabbit Polyclonal Antibody (Pab)

Catalog # AW5353

Product Information

Application	WB
Primary Accession	Q9NX63
Reactivity	Human
Host	Rabbit
Clonality	polyclonal
Calculated MW	26152
Isotype	Rabbit IgG
Antigen Source	HUMAN

Additional Information

Gene ID	54927
Antigen Region	83-116
Other Names	Coiled-coil-helix-coiled-coil-helix domain-containing protein 3, mitochondrial, CHCHD3, MINOS3
Dilution	WB~~1:1000
Target/Specificity	This CHCHD3 antibody is generated from a rabbit immunized with a KLH conjugated synthetic peptide between 83-116 amino acids from the Central region of human CHCHD3.
Format	Purified polyclonal antibody supplied in PBS with 0.09% (W/V) sodium azide. This antibody is purified through a protein A column, followed by peptide affinity purification.
Storage	Maintain refrigerated at 2-8°C for up to 2 weeks. For long term storage store at -20°C in small aliquots to prevent freeze-thaw cycles.
Precautions	CHCHD3 Antibody (Center) is for research use only and not for use in diagnostic or therapeutic procedures.

Protein Information

Name	CHCHD3
Synonyms	MIC19, MINOS3
Function	Component of the MICOS complex, a large protein complex of the

mitochondrial inner membrane that plays crucial roles in the maintenance of crista junctions, inner membrane architecture, and formation of contact sites to the outer membrane (PubMed:[25781180](#), PubMed:[32567732](#), PubMed:[33130824](#)). Plays an important role in the maintenance of the MICOS complex stability and the mitochondrial cristae morphology (PubMed:[25781180](#), PubMed:[32567732](#), PubMed:[33130824](#)). Has also been shown to function as a transcription factor which binds to the BAG1 promoter and represses BAG1 transcription (PubMed:[22567091](#)).

Cellular Location

Mitochondrion inner membrane {ECO:0000250|UniProtKB:Q9CRB9}; Lipid-anchor; Intermembrane side {ECO:0000250|UniProtKB:Q9CRB9}. Cytoplasm. Nucleus Mitochondrion

Tissue Location

Detected at low levels in brain, placenta, lung, liver, kidney and pancreas with increased levels in heart and skeletal muscle. Higher expression in primary lung cancers than in normal lung tissue.

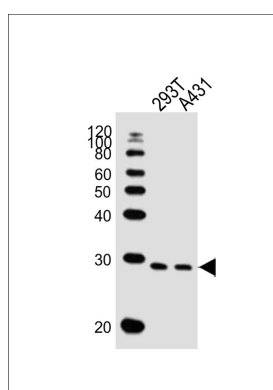
Background

Required for maintenance of mitochondrial crista integrity and mitochondrial function. May act as a scaffolding protein that stabilizes protein complexes involved in crista architecture and protein import. Has also been shown to function as a transcription factor which binds to the BAG1 promoter and represses BAG1 transcription.

References

Ota T.,et al.Nat. Genet. 36:40-45(2004).
Daub H.,et al.Mol. Cell 31:438-448(2008).
Dephoure N.,et al.Proc. Natl. Acad. Sci. U.S.A. 105:10762-10767(2008).
Mayya V.,et al.Sci. Signal. 2:RA46-RA46(2009).
Choudhary C.,et al.Science 325:834-840(2009).

Images



All lanes : Anti-CHCHD3 Antibody (Center)(AW5353) at 1/1000 dilution Lane 1: 293T whole cell lysates Lane 2: A431 whole cell lysates Lysates/proteins at 20 µg per lane. Secondary Goat Anti-Rabbit IgG, (H+L), Peroxidase conjugated at 1/10000 dilution Predicted band size : 28 kDa Blocking/Dilution buffer: 5% NFDM/TBST.

Please note: All products are 'FOR RESEARCH USE ONLY. NOT FOR USE IN DIAGNOSTIC OR THERAPEUTIC PROCEDURES'.