

# Maspin Antibody (Center)

Affinity Purified Rabbit Polyclonal Antibody (Pab)

Catalog # AW5365

## Product Information

---

<b>Application</b>	IF, IHC-P, WB
<b>Primary Accession</b>	<a href="#">P36952</a>
<b>Other Accession</b>	<a href="#">P70124</a> , <a href="#">NP_002630.2</a>
<b>Reactivity</b>	Mouse, Rat, Human
<b>Predicted</b>	Mouse, Rat
<b>Host</b>	Rabbit
<b>Clonality</b>	Polyclonal
<b>Calculated MW</b>	42100
<b>Isotype</b>	Rabbit IgG
<b>Antigen Source</b>	HUMAN

## Additional Information

---

<b>Gene ID</b>	5268
<b>Antigen Region</b>	94-123
<b>Other Names</b>	SERPINB5; PI5; Serpin B5; Maspin; Peptidase inhibitor 5
<b>Dilution</b>	IF~~1:10~50 IHC-P~~1:100~500 WB~~1:1000
<b>Target/Specificity</b>	This Maspin antibody is generated from rabbits immunized with a KLH conjugated synthetic peptide between 94-123 amino acids from the Central region of human Maspin.
<b>Format</b>	Purified polyclonal antibody supplied in PBS with 0.09% (W/V) sodium azide. This antibody is purified through a protein A column, followed by peptide affinity purification.
<b>Storage</b>	Maintain refrigerated at 2-8°C for up to 2 weeks. For long term storage store at -20°C in small aliquots to prevent freeze-thaw cycles.
<b>Precautions</b>	Maspin Antibody (Center) is for research use only and not for use in diagnostic or therapeutic procedures.

## Protein Information

---

<b>Name</b>	SERPINB5
<b>Synonyms</b>	PI5

<b>Function</b>	Tumor suppressor. It blocks the growth, invasion, and metastatic properties of mammary tumors. As it does not undergo the S (stressed) to R (relaxed) conformational transition characteristic of active serpins, it exhibits no serine protease inhibitory activity.
<b>Cellular Location</b>	Secreted, extracellular space.
<b>Tissue Location</b>	Normal mammary epithelial cells.

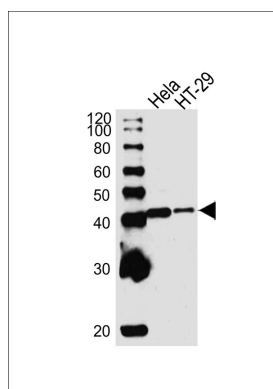
## Background

SERPINB5 is a tumor suppressor. It blocks the growth, invasion, and metastatic properties of mammary tumors. As it does not undergo the S (stressed) to R (relaxed) conformational transition characteristic of active serpins, it exhibits no serine protease inhibitory activity.

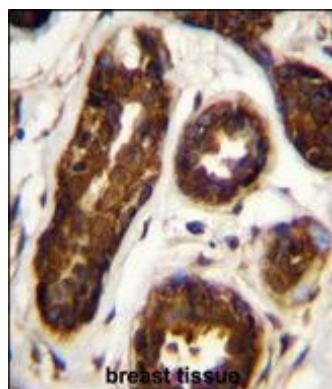
## References

Kim, J., et al. Tumour Biol. 31(5):471-476(2010)  
 Juengel, E., et al. World J Urol 28(4):465-471(2010)  
 Besgen, P., et al. J. Immunol. 184(9):5392-5402(2010)  
 Fung, C.L., et al. Histopathology 56(3):319-330(2010)  
 Adim, S.B., et al. World J Surg Oncol 8, 22 (2010) :

## Images

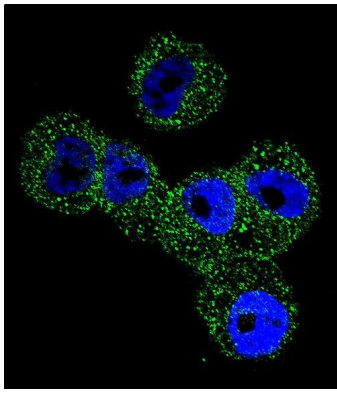


All lanes : Anti-Maspin Antibody (Center)(AW5365) at 1/1000 dilution Lane 1: Hela whole cell lysates Lane 2: HT-29 whole cell lysates Lysates/proteins at 20 µg per lane. Secondary Goat Anti-Rabbit IgG, (H+L), Peroxidase conjugated at 1/10000 dilution Predicted band size : 42 kDa Blocking/Dilution buffer: 5% NFDM/TBST.



Maspin Antibody (Center) (Cat. #AW5365) immunohistochemistry analysis in formalin fixed and paraffin embedded human breast tissue followed by peroxidase conjugation of the secondary antibody and DAB staining. This data demonstrates the use of Maspin Antibody (Center) for immunohistochemistry. Clinical relevance has not been evaluated.

Confocal immunofluorescent analysis of Maspin Antibody (Center)(Cat#AW5365) with A2058 cell followed by Alexa Fluor 488-conjugated goat anti-rabbit IgG (green). DAPI was used to stain the cell nuclear (blue).



Please note: All products are 'FOR RESEARCH USE ONLY. NOT FOR USE IN DIAGNOSTIC OR THERAPEUTIC PROCEDURES'.