

IL13RA1 Antibody (C-term)

Purified Rabbit Polyclonal Antibody (Pab)

Catalog # AW5366

Product Information

Application	WB
Primary Accession	P78552
Reactivity	Human
Host	Rabbit
Clonality	Polyclonal
Calculated MW	48760
Isotype	Rabbit IgG
Antigen Source	HUMAN

Additional Information

Gene ID	3597
Antigen Region	13-42
Other Names	Interleukin-13 receptor subunit alpha-1, IL-13 receptor subunit alpha-1, IL-13R subunit alpha-1, IL-13R-alpha-1, IL-13RA1, Cancer/testis antigen 19, CT19, CD213a1, IL13RA1, IL13R, IL13RA
Dilution	WB~~1:1000
Target/Specificity	This IL13RA1 antibody is generated from a rabbit immunized with a KLH conjugated synthetic peptide between 207-238 amino acids from the C-terminal region of human IL13RA1.
Format	Purified polyclonal antibody supplied in PBS with 0.09% (W/V) sodium azide. This antibody is purified through a protein A column, followed by peptide affinity purification.
Storage	Maintain refrigerated at 2-8°C for up to 2 weeks. For long term storage store at -20°C in small aliquots to prevent freeze-thaw cycles.
Precautions	IL13RA1 Antibody (C-term) is for research use only and not for use in diagnostic or therapeutic procedures.

Protein Information

Name	IL13RA1
Synonyms	IL13R, IL13RA

Function	Binds with low affinity to interleukin-13 (IL13). Together with IL4RA can form a functional receptor for IL13. Also serves as an alternate accessory protein to the common cytokine receptor gamma chain for interleukin-4 (IL4) signaling, but cannot replace the function of IL2RG in allowing enhanced interleukin-2 (IL2) binding activity.
Cellular Location	Membrane; Single-pass type I membrane protein.
Tissue Location	Ubiquitous. Highest levels in heart, liver, skeletal muscle and ovary; lowest levels in brain, lung and kidney Also found in B-cells, T-cells and endothelial cells

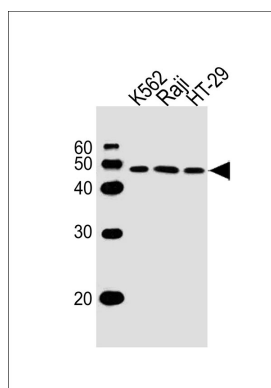
Background

Binds with low affinity to interleukin-13 (IL13). Together with IL4RA can form a functional receptor for IL13. Also serves as an alternate accessory protein to the common cytokine receptor gamma chain for interleukin-4 (IL4) signaling, but cannot replace the function of IL2RG in allowing enhanced interleukin-2 (IL2) binding activity.

References

Miloux B.,et al.FEBS Lett. 401:163-166(1997).
Gauchat J.-F.,et al.Submitted (JAN-1997) to the EMBL/GenBank/DDBJ databases.
Aman M.J.,et al.J. Biol. Chem. 271:29265-29270(1996).
Wada M.,et al.Submitted (SEP-1999) to the EMBL/GenBank/DDBJ databases.
Ota T.,et al.Nat. Genet. 36:40-45(2004).

Images



All lanes : Anti-IL13RA1 Antibody (C-term) at 1/1000 dilution
Lane 1: K562 whole cell lysates
Lane 2: Raji whole cell lysates
Lane 3: HT-29 whole cell lysates
Lysates/proteins at 20 µg per lane. Secondary Goat Anti-Rabbit IgG, (H+L), Peroxidase conjugated at 1/10000 dilution
Predicted band size : 49 kDa
Blocking/Dilution buffer: 5% NFDM/TBST.

Please note: All products are 'FOR RESEARCH USE ONLY. NOT FOR USE IN DIAGNOSTIC OR THERAPEUTIC PROCEDURES'.