

SERBP1 Antibody (Center)

Purified Rabbit Polyclonal Antibody (Pab)

Catalog # AW5368

Product Information

Application	WB
Primary Accession	Q8NC51
Reactivity	Human
Predicted	Mouse, Rat
Host	Rabbit
Clonality	Polyclonal
Calculated MW	44965
Isotype	Rabbit IgG
Antigen Source	HUMAN

Additional Information

Gene ID	26135
Antigen Region	149-183
Other Names	Plasminogen activator inhibitor 1 RNA-binding protein, PAI1 RNA-binding protein 1, PAI-RBP1, SERPINE1 mRNA-binding protein 1, SERBP1, PAIRBP1
Dilution	WB~~1:1000
Target/Specificity	This SERBP1 antibody is generated from a rabbit immunized with a KLH conjugated synthetic peptide between 149-183 amino acids from the Central region of human SERBP1.
Format	Purified polyclonal antibody supplied in PBS with 0.09% (W/V) sodium azide. This antibody is purified through a protein A column, followed by peptide affinity purification.
Storage	Maintain refrigerated at 2-8°C for up to 2 weeks. For long term storage store at -20°C in small aliquots to prevent freeze-thaw cycles.
Precautions	SERBP1 Antibody (Center) is for research use only and not for use in diagnostic or therapeutic procedures.

Protein Information

Name	SERBP1 {ECO:0000303 PubMed:36691768, ECO:0000312 HGNC:HGNC:17860}
Function	Ribosome-binding protein that promotes ribosome hibernation, a process

during which ribosomes are stabilized in an inactive state and preserved from proteasomal degradation (PubMed:[36691768](#)). Acts via its association with EEF2/eEF2 factor, sequestering EEF2/eEF2 at the A- site of the ribosome and promoting ribosome stabilization and storage in an inactive state (By similarity). May also play a role in the regulation of mRNA stability: binds to the 3'-most 134 nt of the SERPINE1/PAI1 mRNA, a region which confers cyclic nucleotide regulation of message decay (PubMed:[11001948](#)). Seems to play a role in PML-nuclear bodies formation (PubMed:[28695742](#)).

Cellular Location

Cytoplasm. Nucleus. Cytoplasm, perinuclear region

Tissue Location

Expressed at high level in the heart, skeletal muscle and kidney, and at low levels in placenta, liver and brain

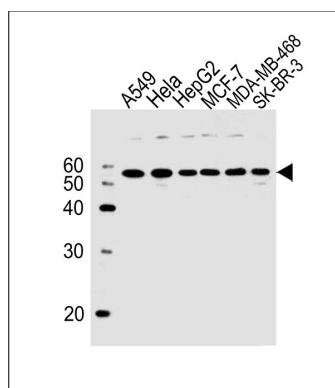
Background

May play a role in the regulation of mRNA stability. Binds to the 3'-most 134 nt of the SERPINE1/PAI1 mRNA, a region which confers cyclic nucleotide regulation of message decay.

References

Lai C.-H.,et al.Genome Res. 10:703-713(2000).
Wiemann S.,et al.Genome Res. 11:422-435(2001).
Ota T.,et al.Nat. Genet. 36:40-45(2004).
Ebert L.,et al.Submitted (JUN-2004) to the EMBL/GenBank/DDBJ databases.
Gregory S.G.,et al.Nature 441:315-321(2006).

Images



All lanes : Anti-SERBP1 Antibody (Center) at 1:1/1000 dilution
Lane 1: A549 whole cell lysates
Lane 2: HeLa whole cell lysates
Lane 3: HepG2 whole cell lysates
Lane 4: MCF-7 whole cell lysates
Lane 5: MDA-MB-468 whole cell lysates
Lane 6: SK-BR-3 whole cell lysates
Lysates/proteins at 20 µg per lane. Secondary Goat Anti-Rabbit IgG, (H+L), Peroxidase conjugated at 1/10000 dilution
Predicted band size : 45 kDa
Blocking/Dilution buffer: 5% NFDM/TBST.

Please note: All products are 'FOR RESEARCH USE ONLY. NOT FOR USE IN DIAGNOSTIC OR THERAPEUTIC PROCEDURES'.