

IMMT Antibody (Center)

Purified Rabbit Polyclonal Antibody (Pab)

Catalog # AW5372

Product Information

Application	WB
Primary Accession	Q16891
Reactivity	Human
Host	Rabbit
Clonality	Polyclonal
Calculated MW	83678
Isotype	Rabbit IgG
Antigen Source	HUMAN

Additional Information

Gene ID	10989
Antigen Region	170-203
Other Names	MICOS complex subunit MIC60, Cell proliferation-inducing gene 4/52 protein, Mitochondrial inner membrane protein, Mitofilin, p87/89, IMMT, HMP, MIC60, MINOS2
Dilution	WB~~1:1000
Target/Specificity	This IMMT antibody is generated from a rabbit immunized with a KLH conjugated synthetic peptide between 170-203 amino acids from the Central region of human IMMT.
Format	Purified polyclonal antibody supplied in PBS with 0.09% (W/V) sodium azide. This antibody is purified through a protein A column, followed by peptide affinity purification.
Storage	Maintain refrigerated at 2-8°C for up to 2 weeks. For long term storage store at -20°C in small aliquots to prevent freeze-thaw cycles.
Precautions	IMMT Antibody (Center) is for research use only and not for use in diagnostic or therapeutic procedures.

Protein Information

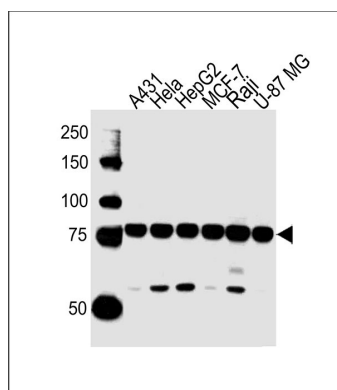
Name	IMMT
Synonyms	HMP, MIC60, MINOS2

Function	Component of the MICOS complex, a large protein complex of the mitochondrial inner membrane that plays crucial roles in the maintenance of crista junctions, inner membrane architecture, and formation of contact sites to the outer membrane (PubMed: 22114354 , PubMed: 25781180 , PubMed: 32567732 , PubMed: 33130824). Plays an important role in the maintenance of the MICOS complex stability and the mitochondrial cristae morphology (PubMed: 22114354 , PubMed: 25781180 , PubMed: 32567732 , PubMed: 33130824).
Cellular Location	Mitochondrion inner membrane; Single-pass membrane protein. Mitochondrion

References

Ichio T.,et al.Gene 144:301-306(1994).
Gieffers C.,et al.Exp. Cell Res. 232:395-399(1997).
Ebert L.,et al.Submitted (JUN-2004) to the EMBL/GenBank/DDBJ databases.
Ota T.,et al.Nat. Genet. 36:40-45(2004).
Kim J.W.,et al.Submitted (FEB-2005) to the EMBL/GenBank/DDBJ databases.

Images



All lanes : Anti-IMMT Antibody (Center) at 1/1000 dilution
Lane 1: A431 whole cell lysates Lane 2: HeLa whole cell lysates Lane 3: HepG2 whole cell lysates Lane 4: MCF-7 whole cell lysates Lane 5: Raji whole cell lysates Lane 6: U-87 MG whole cell lysates Lysates/proteins at 20 µg per lane. Secondary Goat Anti-Rabbit IgG, (H+L), Peroxidase conjugated at 1/10000 dilution Predicted band size : 84 kDa Blocking/Dilution buffer: 5% NFDM/TBST.

Please note: All products are 'FOR RESEARCH USE ONLY. NOT FOR USE IN DIAGNOSTIC OR THERAPEUTIC PROCEDURES'.