

SLC25A37 Antibody (C-term)

Affinity Purified Rabbit Polyclonal Antibody (Pab)
Catalog # AW5376

Product Information

Application	IF, FC, IHC-P, WB
Primary Accession	Q9NYZ2
Reactivity	Mouse, Rat, Human
Predicted	Mouse
Host	Rabbit
Clonality	Polyclonal
Calculated MW	37323
Isotype	Rabbit IgG
Antigen Source	HUMAN

Additional Information

Gene ID	51312
Antigen Region	309-338
Other Names	Mitoferrin-1, Mitochondrial iron transporter 1, Mitochondrial solute carrier protein, Solute carrier family 25 member 37, SLC25A37, MFRN, MSCP
Dilution	IF~~1:25 FC~~1:10~50 IHC-P~~1:100~500 WB~~1:1000
Target/Specificity	This SLC25A37 antibody is generated from rabbits immunized with a KLH conjugated synthetic peptide between 309-338 amino acids from the C-terminal region of human SLC25A37.
Format	Purified polyclonal antibody supplied in PBS with 0.09% (W/V) sodium azide. This antibody is purified through a protein A column, followed by peptide affinity purification.
Storage	Maintain refrigerated at 2-8°C for up to 2 weeks. For long term storage store at -20°C in small aliquots to prevent freeze-thaw cycles.
Precautions	SLC25A37 Antibody (C-term) is for research use only and not for use in diagnostic or therapeutic procedures.

Protein Information

Name	SLC25A37
Synonyms	MFRN, MSCP

Function	Mitochondrial iron transporter that specifically mediates iron uptake in developing erythroid cells, thereby playing an essential role in heme biosynthesis.
Cellular Location	Mitochondrion inner membrane {ECO:0000250 UniProtKB:Q287T7}; Multi-pass membrane protein

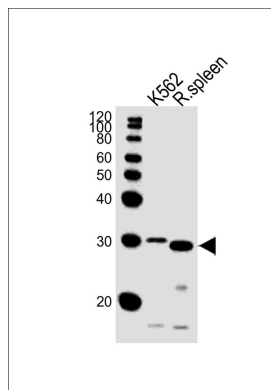
Background

SLC25A37 belongs to the SLC25 family of mitochondrial carrier proteins (Haitina et al., 2006 [PubMed 16949250]).[supplied by OMIM].

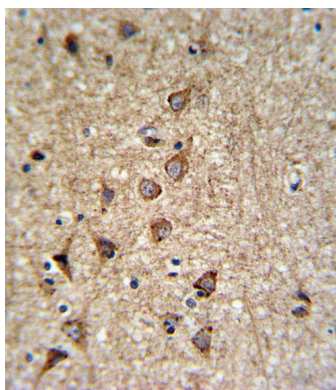
References

Kaneko, K., et al. FEBS J. 276(5):1370-1382(2009) Haitina, T., et al. Genomics 88(6):779-790(2006) Shaw, G.C., et al. Nature 440(7080):96-100(2006) Li, Q.Z., et al. Mamm. Genome 12(11):830-836(2001)

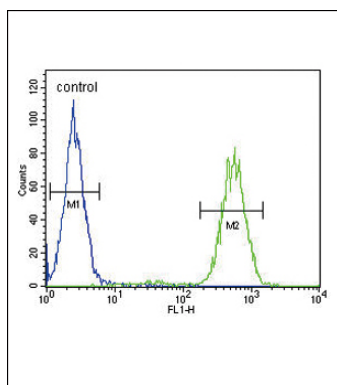
Images



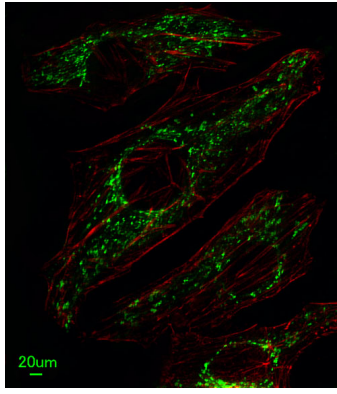
All lanes : Anti-SLC25A37 Antibody (C-term) at 1:1000 dilution Lane 1: K562 whole cell lysates Lane 2: rat spleen lysates Lysates/proteins at 20 µg per lane. Secondary Goat Anti-Rabbit IgG, (H+L), Peroxidase conjugated at 1/10000 dilution Predicted band size : 37 kDa Blocking/Dilution buffer: 5% NFD/MTBST.



SLC25A37 Antibody (C-term) (Cat. #AW5376) IHC analysis in formalin fixed and paraffin embedded brain tissue followed by peroxidase conjugation of the secondary antibody and DAB staining. This data demonstrates the use of the SLC25A37 Antibody (C-term) for immunohistochemistry. Clinical relevance has not been evaluated.



SLC25A37 Antibody (C-term) (Cat. #AW5376) flow cytometric analysis of MDA-MB231 cells (right histogram) compared to a negative control cell (left histogram). FITC-conjugated goat-anti-rabbit secondary antibodies were used for the analysis.



Immunofluorescent analysis of HeLa cells, using SLC25A37 Antibody (C-term) (Cat. #AW5376). AW5376 was diluted at 1:25 dilution. Alexa Fluor 488-conjugated goat anti-rabbit IgG at 1:400 dilution was used as the secondary antibody (green). Cytoplasmic actin was counterstained with Dylight Fluor® 554 (red) conjugated Phalloidin (red).

Please note: All products are 'FOR RESEARCH USE ONLY. NOT FOR USE IN DIAGNOSTIC OR THERAPEUTIC PROCEDURES'.